



569391037

DIAMOND REPORT ELECTRONIC COPY

February 27, 2023
IGI Report Number 569391037
Description NATURAL DIAMOND
Shape and Cutting Style ROUND BRILLIANT
Measurements 7.25 - 7.31 x 4.54 mm

GRADING RESULTS

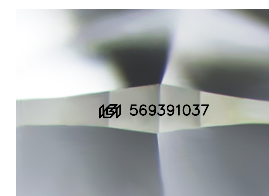
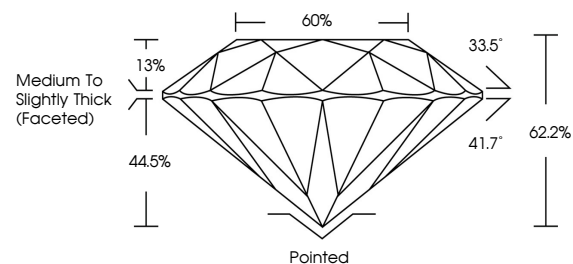
Carat Weight 1.50 CARAT
Color Grade K
Clarity Grade VVS 1
Cut Grade EXCELLENT

ADDITIONAL GRADING INFORMATION

Polish EXCELLENT
Symmetry EXCELLENT
Fluorescence NONE
Inscription(s) IGI 569391037



PROPORTIONS



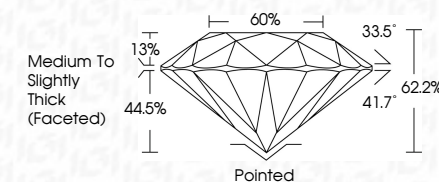
Sample Image Used



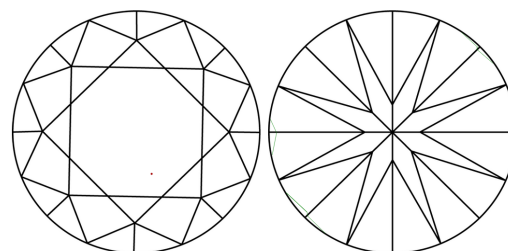
February 27, 2023
IGI Report Number 569391037
Description NATURAL DIAMOND
Shape and Cutting Style ROUND BRILLIANT
Measurements 7.25 - 7.31 x 4.54 mm

GRADING RESULTS

Carat Weight 1.50 CARAT
Color Grade K
Clarity Grade VVS 1
Cut Grade EXCELLENT



CLARITY CHARACTERISTICS



KEY TO SYMBOLS

Red symbols indicate internal characteristics.
Green symbols indicate external characteristics.

COLOR

Table with 6 columns: D-F, G-J, K-M, N-R, S-Z, FANCY. Row 1: Colorless, Near Colorless, Slightly Tinted, Very Light Color, Light Color.

CLARITY

Table with 5 columns: IF, VS 1-2, VS 1-2, SI 1-2, I 1-3. Row 1: Internally Flawless, Very Very Slightly Included, Very Slightly Included, Slightly Included, Included.

ADDITIONAL GRADING INFORMATION

Polish EXCELLENT
Symmetry EXCELLENT
Fluorescence NONE
Inscription(s) IGI 569391037



IGI

February 27, 2023
IGI Report No 569391037
NATURAL DIAMOND
ROUND BRILLIANT
7.25 - 7.31 x 4.54 mm
Carat Weight 1.50 CARAT
Color Grade K
Clarity Grade VVS 1
Cut Grade EXCELLENT
Depth 62%
Table 60%
Girdle Medium To Slightly Thick (Faceted)
Culet Pointed
Polish EXCELLENT
Symmetry EXCELLENT
Fluorescence NONE
Inscriptions(s) IGI 569391037