



**ELECTRONIC COPY**

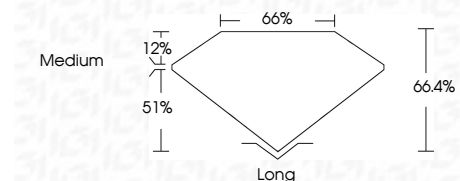
569305185  
Report verification at [igi.org](http://igi.org)



November 18, 2024  
IGI Report Number **569305185**  
Description **NATURAL DIAMOND**  
Shape and Cutting Style **EMERALD CUT**  
Measurements **13.59 X 8.91 X 5.92 MM**

**GRADING RESULTS**

Carat Weight **7.03 CARATS**  
Color Grade **H**  
Clarity Grade **VVS 1**  
Cut Grade **VERY GOOD**



**ADDITIONAL GRADING INFORMATION**

Polish **EXCELLENT**  
Symmetry **EXCELLENT**  
Fluorescence **NONE**  
Inscription(s) **IGI 569305185**



**IGI**

November 18, 2024  
IGI Report No. 569305185  
**EMERALD CUT**  
13.59 X 8.91 X 5.92 MM  
7.03 CARATS  
H  
Color Grade  
VVS 1  
Clarity Grade  
VERY GOOD  
51%  
66%  
Depth  
66%  
Table  
12%  
Cut Grade  
Medium  
Cutlet  
Long  
Polish  
EXCELLENT  
Symmetry  
EXCELLENT  
Fluorescence  
NONE  
Inscription(s)  
IGI 569305185

**DIAMOND REPORT**

November 18, 2024  
IGI Report Number **569305185**  
Description **NATURAL DIAMOND**  
Shape and Cutting Style **EMERALD CUT**  
Measurements **13.59 X 8.91 X 5.92 MM**

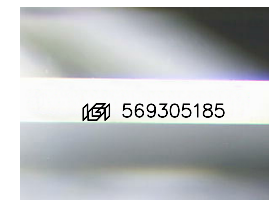
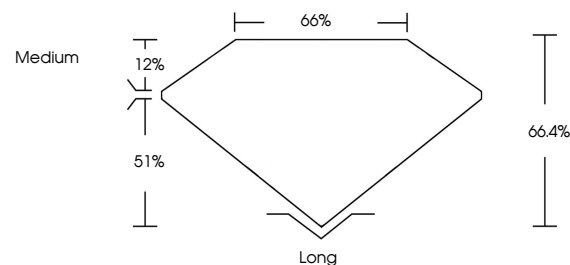
**GRADING RESULTS**

Carat Weight **7.03 CARATS**  
Color Grade **H**  
Clarity Grade **VVS 1**  
Cut Grade **VERY GOOD**

**ADDITIONAL GRADING INFORMATION**

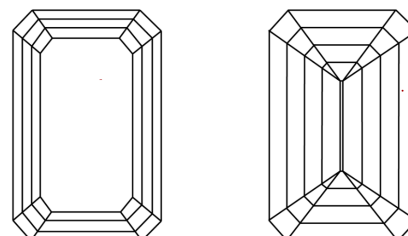
Polish **EXCELLENT**  
Symmetry **EXCELLENT**  
Fluorescence **NONE**  
Inscription(s) **IGI 569305185**

**PROPORTIONS**



Sample Image Used

**CLARITY CHARACTERISTICS**



**KEY TO SYMBOLS**

Red symbols indicate internal characteristics.  
Green symbols indicate external characteristics.

**COLOR**

D - F	G - J	K - M	N - R	S - Z	FANCY
Colorless	Near Colorless	Slightly Tinted	Very Light Color	Light Color	

**CLARITY**

IF	VVS <sup>1-2</sup>	VS <sup>1-2</sup>	SI <sup>1-2</sup>	I <sup>1-3</sup>
Internally Flawless	Very Very Slightly Included	Very Slightly Included	Slightly Included	Included

