



561271175

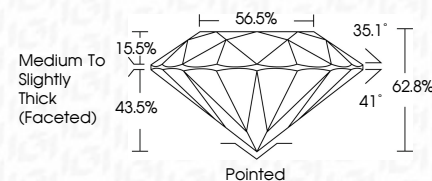
DIAMOND REPORT **ELECTRONIC COPY**



January 24, 2023
 IGI Report Number 561271175
 Description NATURAL DIAMOND
 Shape and Cutting Style ROUND BRILLIANT
 Measurements 7.99 - 8.02 x 5.02 mm

GRADING RESULTS

Carat Weight 2.00 CARATS
 Color Grade K
 Clarity Grade SI 1
 Cut Grade EXCELLENT



January 24, 2023
 IGI Report Number 561271175
 Description NATURAL DIAMOND
 Shape and Cutting Style ROUND BRILLIANT
 Measurements 7.99 - 8.02 x 5.02 mm

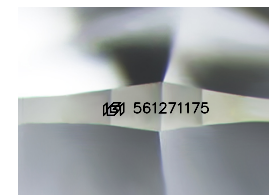
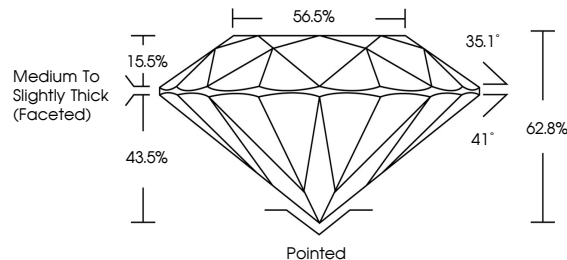
GRADING RESULTS

Carat Weight 2.00 CARATS
 Color Grade K
 Clarity Grade SI 1
 Cut Grade EXCELLENT

ADDITIONAL GRADING INFORMATION

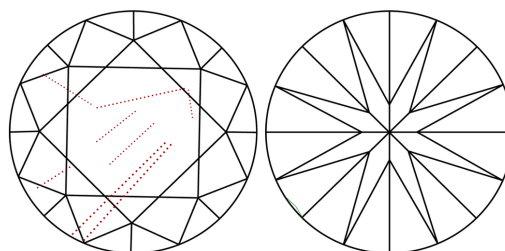
Polish EXCELLENT
 Symmetry EXCELLENT
 Fluorescence NONE
 Inscription(s) IGI 561271175

PROPORTIONS



Sample Image Used

CLARITY CHARACTERISTICS



KEY TO SYMBOLS

Red symbols indicate internal characteristics.
 Green symbols indicate external characteristics.

COLOR

D - F	G - J	K - M	N - R	S - Z	FANCY
Colorless	Near Colorless	Slightly Tinted	Very Light Color	Light Color	

CLARITY

IF	VS 1-2	VS 1-2	SI 1-2	I 1-3
Internally Flawless	Very Very Slightly Included	Very Slightly Included	Slightly Included	Included

ADDITIONAL GRADING INFORMATION

Polish EXCELLENT
 Symmetry EXCELLENT
 Fluorescence NONE
 Inscription(s) IGI 561271175



IGI



January 24, 2023
 IGI Report No 561271175
 NATURAL DIAMOND
 ROUND BRILLIANT
 7.99 - 8.02 x 5.02 mm
 Carat Weight 2.00 CARATS
 Color Grade K
 Clarity Grade SI 1
 Cut Grade EXCELLENT
 Depth 62.8%
 Table 56.5%
 Grade Medium To Slightly Thick (Faceted)
 Culet Pointed
 Polish EXCELLENT
 Symmetry EXCELLENT
 Fluorescence NONE
 Inscription(s) IGI 561271175