



ELECTRONIC COPY

553230245
Report verification at igi.org



June 19, 2024
IGI Report Number **553230245**
Description **NATURAL DIAMOND**
Shape and Cutting Style **EMERALD CUT**
Measurements **11.88 X 8.12 X 5.57 MM**
GRADING RESULTS
Carat Weight **5.13 CARATS**
Color Grade **J**
Clarity Grade **SI 2**
Cut Grade **VERY GOOD**

DIAMOND REPORT

June 19, 2024
IGI Report Number **553230245**
Description **NATURAL DIAMOND**
Shape and Cutting Style **EMERALD CUT**
Measurements **11.88 X 8.12 X 5.57 MM**

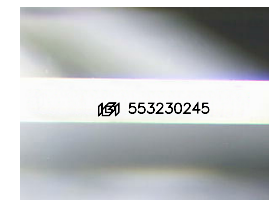
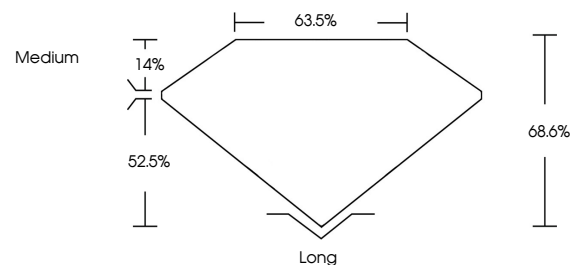
GRADING RESULTS

Carat Weight **5.13 CARATS**
Color Grade **J**
Clarity Grade **SI 2**
Cut Grade **VERY GOOD**

ADDITIONAL GRADING INFORMATION

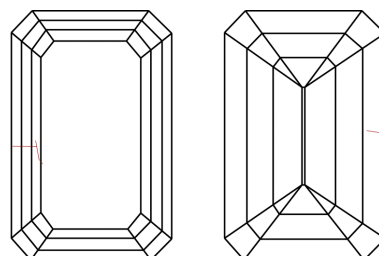
Polish **EXCELLENT**
Symmetry **EXCELLENT**
Fluorescence **NONE**
Inscription(s) **553230245**

PROPORTIONS



Sample Image Used

CLARITY CHARACTERISTICS



KEY TO SYMBOLS

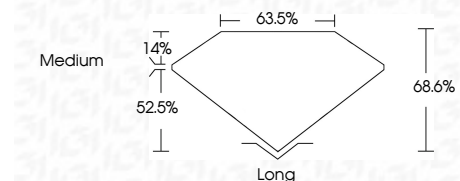
Red symbols indicate internal characteristics.
Green symbols indicate external characteristics.

COLOR

D - F	G - J	K - M	N - R	S - Z	FANCY
Colorless	Near Colorless	Slightly Tinted	Very Light Color	Light Color	

CLARITY

IF	VVS ¹⁻²	VS ¹⁻²	SI ¹⁻²	I ¹⁻³
Internally Flawless	Very Very Slightly Included	Very Slightly Included	Slightly Included	Included



ADDITIONAL GRADING INFORMATION

Polish **EXCELLENT**
Symmetry **EXCELLENT**
Fluorescence **NONE**
Inscription(s) **553230245**



IGI



June 19, 2024
IGI Report No. 553230245
EMERALD CUT
11.88 X 8.12 X 5.57 MM
5.13 CARATS
J
SI 2
VERY GOOD
68.6%
63.5%
Medium
Long
EXCELLENT
EXCELLENT
NONE
 553230245