



547244211

**DIAMOND REPORT**

**ELECTRONIC COPY**



October 8, 2022  
IGI Report Number 547244211  
Description NATURAL DIAMOND  
Shape and Cutting Style ROUND BRILLIANT  
Measurements 8.05 - 8.08 x 5.01 mm

**GRADING RESULTS**

Carat Weight 2.01 CARATS  
Color Grade H  
Clarity Grade VVS 1  
Cut Grade EXCELLENT

October 8, 2022  
IGI Report Number 547244211  
Description NATURAL DIAMOND  
Shape and Cutting Style ROUND BRILLIANT  
Measurements 8.05 - 8.08 x 5.01 mm

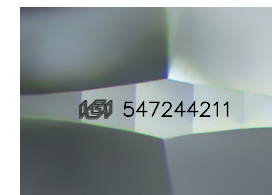
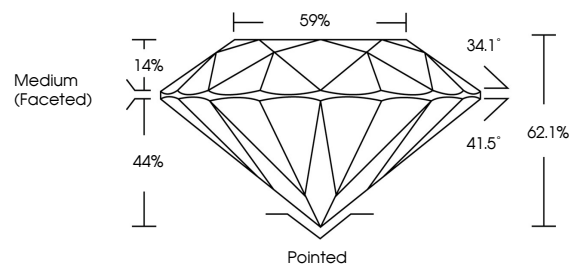
**GRADING RESULTS**

Carat Weight 2.01 CARATS  
Color Grade H  
Clarity Grade VVS 1  
Cut Grade EXCELLENT

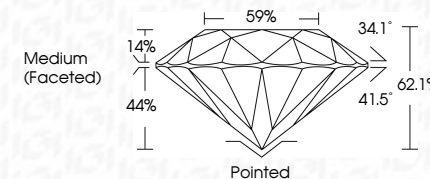
**ADDITIONAL GRADING INFORMATION**

Polish EXCELLENT  
Symmetry EXCELLENT  
Fluorescence NONE  
Inscription(s) IGI 547244211  
Comments: IDEAL CUT ROUND BRILLIANT

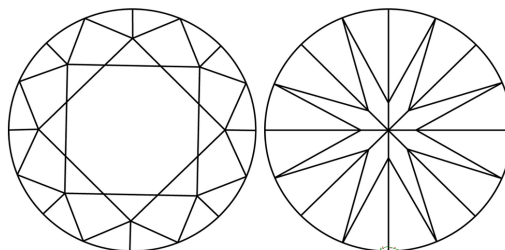
**PROPORTIONS**



Sample Image Used



**CLARITY CHARACTERISTICS**



**COLOR**

D - F	G - J	K - M	N - R	S - Z	FANCY
Colorless	Near Colorless	Slightly Tinted	Very Light Color	Light Color	

**CLARITY**

IF	VS <sup>1-2</sup>	VS <sup>1-2</sup>	SI <sup>1-2</sup>	I <sup>1-3</sup>
Internally Flawless	Very Very Slightly Included	Very Slightly Included	Slightly Included	Included

**KEY TO SYMBOLS**

Red symbols indicate internal characteristics.  
Green symbols indicate external characteristics.



**ADDITIONAL GRADING INFORMATION**

Polish EXCELLENT  
Symmetry EXCELLENT  
Fluorescence NONE  
Inscription(s) IGI 547244211  
Comments: IDEAL CUT ROUND BRILLIANT



**IGI**

October 8, 2022  
IGI Report No 547244211  
NATURAL DIAMOND  
ROUND BRILLIANT  
8.05 - 8.08 x 5.01 mm  
Carat Weight 2.01 CARATS  
Color Grade H  
Clarity Grade VVS 1  
Cut Grade EXCELLENT  
Depth 62.1%  
Table 14%  
Girdle 59%  
Culet Medium (Faceted)  
Polish Pointed  
Symmetry EXCELLENT  
Fluorescence NONE  
Inscription(s) IGI 547244211  
Comments: IDEAL CUT ROUND BRILLIANT