



INTERNATIONAL GEMOLOGICAL INSTITUTE

DIAMOND REPORT

ELECTRONIC COPY

October 22, 2022
IGI Report Number 541265498
Description NATURAL DIAMOND
Shape and Cutting Style ROUND BRILLIANT
Measurements 6.07 - 6.11 x 3.90 mm

GRADING RESULTS

Carat Weight 0.91 CARAT
Color Grade K
Clarity Grade VVS 1
Cut Grade VERY GOOD

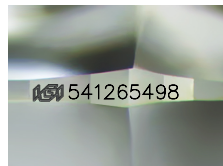
ADDITIONAL GRADING INFORMATION

Polish EXCELLENT
Symmetry EXCELLENT
Fluorescence NONE

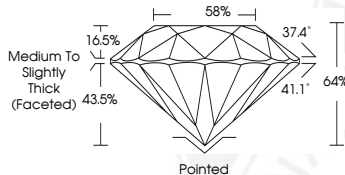
Identification Features FEATHER, PINPOINT
Inscription(s) IGI 541265498



541265498



Sample Image Used



COLOR

D - F	G - J	K - M	N - R	S - Z	FANCY
Colorless	Near Colorless	Slightly Tinted	Very Light Color	Light Color	

CLARITY

IF	VS ¹⁻²	VS ¹⁻²	SI ¹⁻²	I ¹⁻²
Internally Flawless	Very Very Slightly Included	Very Slightly Included	Slightly Included	Included

© IGI 2020, International Gemological Institute

FD - 10 20



October 22, 2022
IGI Report Number 541265498
NATURAL DIAMOND
ROUND BRILLIANT
6.07 - 6.11 x 3.90 mm
Carat Weight 0.91 CARAT
Color Grade K
Clarity Grade VVS 1
Cut Grade VERY GOOD
Polish EXCELLENT
Symmetry EXCELLENT
Fluorescence NONE
Inscription(s) IGI 541265498



October 22, 2022
IGI Report Number 541265498
NATURAL DIAMOND
ROUND BRILLIANT
6.07 - 6.11 x 3.90 mm
Carat Weight 0.91 CARAT
Color Grade K
Clarity Grade VVS 1
Cut Grade VERY GOOD
Polish EXCELLENT
Symmetry EXCELLENT
Fluorescence NONE
Inscription(s) IGI 541265498



THIS DOCUMENT WAS PRODUCED WITH THE FOLLOWING SECURITY MEASURES: SPECIAL DOCUMENT PAPER, INK SCREENS, WATERMARK, BACKGROUND DESIGN, HOLOGRAM AND OTHER SECURITY FEATURES NOT LISTED AND DO EXCEED DOCUMENT SECURITY INDUSTRY GUIDELINES.