



# INTERNATIONAL GEMOLOGICAL INSTITUTE

## DIAMOND REPORT

**ELECTRONIC COPY**

October 16, 2022  
IGI Report Number 539248184  
Description NATURAL DIAMOND  
Shape and Cutting Style ROUND BRILLIANT  
Measurements 5.13 - 5.19 x 3.25 mm

### GRADING RESULTS

Carat Weight 0.54 CARAT  
Color Grade M  
Clarity Grade SI 2  
Cut Grade EXCELLENT

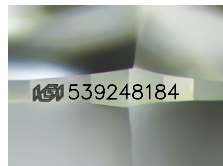
### ADDITIONAL GRADING INFORMATION

Polish EXCELLENT  
Symmetry EXCELLENT  
Fluorescence NONE

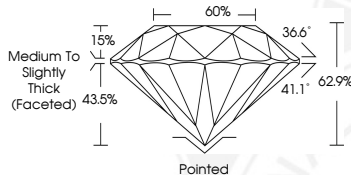
Identification Features CLOUD, CRYSTAL, CAVITY, INDENTED  
NATURAL  
Inscription(s) IGI 539248184



539248184



Sample Image Used



### COLOR

D - F	G - J	K - M	N - R	S - Z	FANCY
Colorless	Near Colorless	Slightly Tinted	Very Light Color	Light Color	

### CLARITY

IF	VS <sup>1-2</sup>	VS <sup>1-2</sup>	SI <sup>1-2</sup>	I <sup>1-2</sup>
Internally Flawless	Very Very Slightly Included	Very Slightly Included	Slightly Included	Included

© IGI 2020, International Gemological Institute

FD - 10 20



October 16, 2022  
IGI Report Number 539248184  
NATURAL DIAMOND  
ROUND BRILLIANT  
5.13 - 5.19 x 3.25 mm  
Carat Weight 0.54 CARAT  
Color Grade M  
Clarity Grade SI 2  
Cut Grade EXCELLENT  
Polish EXCELLENT  
Symmetry EXCELLENT  
Fluorescence NONE  
Inscription(s) IGI 539248184



October 16, 2022  
IGI Report Number 539248184  
NATURAL DIAMOND  
ROUND BRILLIANT  
5.13 - 5.19 x 3.25 mm  
Carat Weight 0.54 CARAT  
Color Grade M  
Clarity Grade SI 2  
Cut Grade EXCELLENT  
Polish EXCELLENT  
Symmetry EXCELLENT  
Fluorescence NONE  
Inscription(s) IGI 539248184



THIS DOCUMENT WAS PRODUCED WITH THE FOLLOWING SECURITY MEASURES: SPECIAL DOCUMENT PAPER, INK SCREENS, WATERMARK, BACKGROUND DESIGN, HOLOGRAM AND OTHER SECURITY FEATURES NOT LISTED AND DO EXCEED DOCUMENT SECURITY INDUSTRY GUIDELINES.