



INTERNATIONAL GEMOLOGICAL INSTITUTE

DIAMOND REPORT

ELECTRONIC COPY

October 16, 2022
IGI Report Number 539248174
Description NATURAL DIAMOND
Shape and Cutting Style ROUND BRILLIANT
Measurements 5.16 - 5.18 x 3.12 mm

GRADING RESULTS

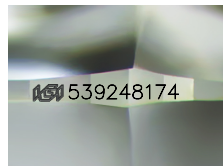
Carat Weight 0.52 CARAT
Color Grade M
Clarity Grade SI 2
Cut Grade EXCELLENT

ADDITIONAL GRADING INFORMATION

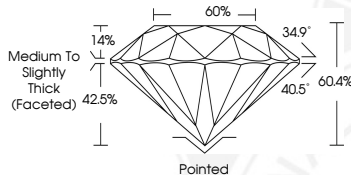
Polish VERY GOOD
Symmetry VERY GOOD
Fluorescence NONE
Identification Features CLOUD
Inscription(s) IGI 539248174



539248174



Sample Image Used



COLOR

D - F	G - J	K - M	N - R	S - Z	FANCY
Colorless	Near Colorless	Slightly Tinted	Very Light Color	Light Color	

CLARITY

IF	VS ¹⁻²	VS ¹⁻²	SI ¹⁻²	I ¹⁻²
Internally Flawless	Very Very Slightly Included	Very Slightly Included	Slightly Included	Included

© IGI 2020, International Gemological Institute

FD - 10 20



October 16, 2022
IGI Report Number 539248174
NATURAL DIAMOND
ROUND BRILLIANT
5.16 - 5.18 x 3.12 mm
Carat Weight 0.52 CARAT
Color Grade M
Clarity Grade SI 2
Cut Grade EXCELLENT
Polish VERY GOOD
Symmetry VERY GOOD
Fluorescence NONE
Inscription(s) IGI 539248174



October 16, 2022
IGI Report Number 539248174
NATURAL DIAMOND
ROUND BRILLIANT
5.16 - 5.18 x 3.12 mm
Carat Weight 0.52 CARAT
Color Grade M
Clarity Grade SI 2
Cut Grade EXCELLENT
Polish VERY GOOD
Symmetry VERY GOOD
Fluorescence NONE
Inscription(s) IGI 539248174



THIS DOCUMENT WAS PRODUCED WITH THE FOLLOWING SECURITY MEASURES: SPECIAL DOCUMENT PAPER, INK SCREENS, WATERMARK, BACKGROUND DESIGN, HOLOGRAM AND OTHER SECURITY FEATURES NOT LISTED AND DO EXCEED DOCUMENT SECURITY INDUSTRY GUIDELINES.