



538281456

DIAMOND REPORT **ELECTRONIC COPY**

July 27, 2022
 IGI Report Number 538281456
 Description NATURAL DIAMOND
 Shape and Cutting Style ROUND BRILLIANT
 Measurements 12.34 - 12.42 x 7.76 mm

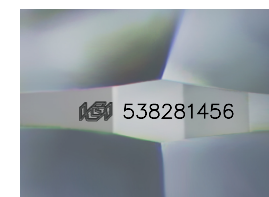
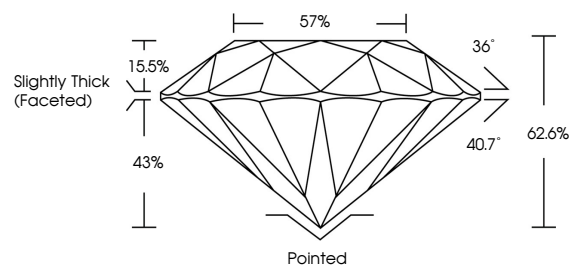
GRADING RESULTS

Carat Weight 7.45 CARATS
 Color Grade H
 Clarity Grade SI 2
 Cut Grade EXCELLENT

ADDITIONAL GRADING INFORMATION

Polish EXCELLENT
 Symmetry EXCELLENT
 Fluorescence VERY SLIGHT
 Inscription(s) IGI 538281456

PROPORTIONS



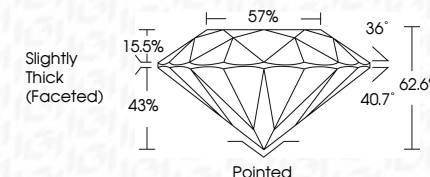
Sample Image Used



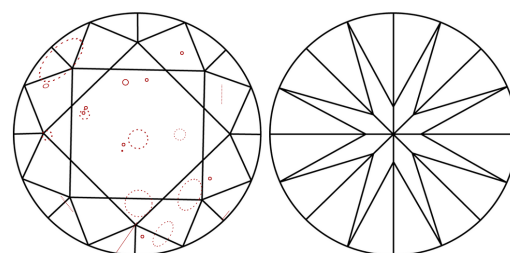
July 27, 2022
 IGI Report Number 538281456
 Description NATURAL DIAMOND
 Shape and Cutting Style ROUND BRILLIANT
 Measurements 12.34 - 12.42 x 7.76 mm

GRADING RESULTS

Carat Weight 7.45 CARATS
 Color Grade H
 Clarity Grade SI 2
 Cut Grade EXCELLENT



CLARITY CHARACTERISTICS



KEY TO SYMBOLS

Red symbols indicate internal characteristics.
 Green symbols indicate external characteristics.

COLOR

D - F	G - J	K - M	N - R	S - Z	FANCY
Colorless	Near Colorless	Slightly Tinted	Very Light Color	Light Color	

CLARITY

IF	VS ¹⁻²	VS ¹⁻²	SI ¹⁻²	I ¹⁻³
Internally Flawless	Very Very Slightly Included	Very Slightly Included	Slightly Included	Included

ADDITIONAL GRADING INFORMATION

Polish EXCELLENT
 Symmetry EXCELLENT
 Fluorescence VERY SLIGHT
 Inscription(s) IGI 538281456



IGI

JULY 27, 2022
 IGI Report No 538281456
 NATURAL DIAMOND
 ROUND BRILLIANT
 12.34 - 12.42 x 7.76 mm
 Carat Weight 7.45 CARATS
 Color Grade H
 Clarity Grade SI 2
 Cut Grade EXCELLENT
 Depth 62.6%
 Table 57%
 Girdle Slightly Thick (Faceted)
 Culet Pointed
 Polish EXCELLENT
 Symmetry EXCELLENT
 Fluorescence VERY SLIGHT
 Inscription(s) IGI 538281456

