



538280845

**DIAMOND REPORT** **ELECTRONIC COPY**

August 8, 2022  
 IGI Report Number 538280845  
 Description NATURAL DIAMOND  
 Shape and Cutting Style ROUND BRILLIANT  
 Measurements 8.57 - 8.63 x 5.34 mm

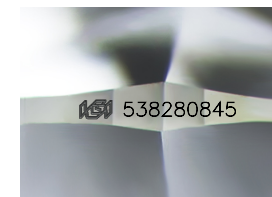
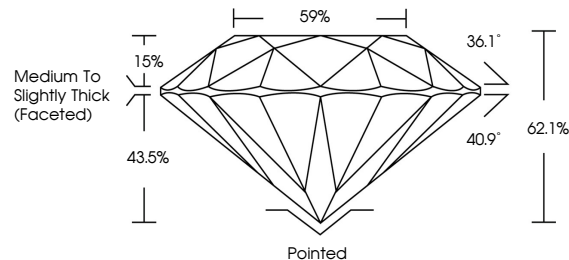
**GRADING RESULTS**

Carat Weight 2.47 CARATS  
 Color Grade J  
 Clarity Grade INTERNALLY FLAWLESS  
 Cut Grade EXCELLENT

**ADDITIONAL GRADING INFORMATION**

Polish EXCELLENT  
 Symmetry EXCELLENT  
 Fluorescence VERY SLIGHT  
 Inscription(s) IGI 538280845  
 Comments: IDEAL CUT ROUND BRILLIANT

**PROPORTIONS**



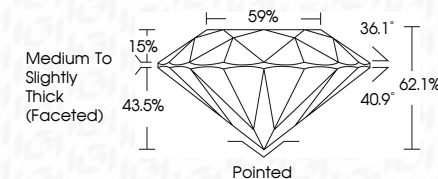
Sample Image Used



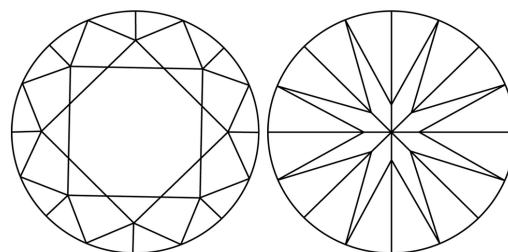
August 8, 2022  
 IGI Report Number 538280845  
 Description NATURAL DIAMOND  
 Shape and Cutting Style ROUND BRILLIANT  
 Measurements 8.57 - 8.63 x 5.34 mm

**GRADING RESULTS**

Carat Weight 2.47 CARATS  
 Color Grade J  
 Clarity Grade INTERNALLY FLAWLESS  
 Cut Grade EXCELLENT



**CLARITY CHARACTERISTICS**



**KEY TO SYMBOLS**

Red symbols indicate internal characteristics.  
 Green symbols indicate external characteristics.

**COLOR**

D - F	G - J	K - M	N - R	S - Z	FANCY
Colorless	Near Colorless	Slightly Tinted	Very Light Color	Light Color	

**CLARITY**

IF	VS <sup>1-2</sup>	VS <sup>1-2</sup>	SI <sup>1-2</sup>	I <sup>1-3</sup>
Internally Flawless	Very Very Slightly Included	Very Slightly Included	Slightly Included	Included

**ADDITIONAL GRADING INFORMATION**

Polish EXCELLENT  
 Symmetry EXCELLENT  
 Fluorescence VERY SLIGHT  
 Inscription(s) IGI 538280845  
 Comments: IDEAL CUT ROUND BRILLIANT



**IGI**

August 8, 2022  
 IGI Report No 538280845  
 NATURAL DIAMOND  
 ROUND BRILLIANT  
 8.57 - 8.63 x 5.34 mm  
 Carat Weight 2.47 CARATS  
 Color Grade J  
 Clarity Grade IF  
 Cut Grade EXCELLENT  
 Depth 62.1%  
 Table 59%  
 Girdle Medium To Slightly Thick (Faceted)  
 Curf Pointed  
 Polish EXCELLENT  
 Symmetry EXCELLENT  
 Fluorescence VERY SLIGHT  
 Inscription(s) IGI 538280845  
 Comments: IDEAL CUT ROUND BRILLIANT