



INTERNATIONAL GEMOLOGICAL INSTITUTE

DIAMOND REPORT

ELECTRONIC COPY

July 20, 2022
IGI Report Number 537232745
Description NATURAL DIAMOND
Shape and Cutting Style ROUND BRILLIANT
Measurements 5.16 - 5.19 x 3.27 mm

GRADING RESULTS

Carat Weight 0.54 CARAT
Color Grade K
Clarity Grade I 1
Cut Grade EXCELLENT

ADDITIONAL GRADING INFORMATION

Polish VERY GOOD
Symmetry EXCELLENT
Fluorescence VERY SLIGHT

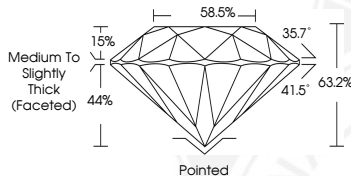
Identification Features FEATHER, CRYSTAL, CLOUD
Inscription(s) IGI 537232745



537232745



Sample Image Used



COLOR

D - F	G - J	K - M	N - R	S - Z	FANCY
Colorless	Near Colorless	Slightly Tinted	Very Light Color	Light Color	

CLARITY

IF	VS ¹⁻²	VS ¹⁻²	SI ¹⁻²	I ¹⁻²
Internally Flawless	Very Very Slightly Included	Very Slightly Included	Slightly Included	Included

© IGI 2020, International Gemological Institute

FD - 10 20



July 20, 2022
IGI Report Number 537232745
NATURAL DIAMOND
ROUND BRILLIANT
5.16 - 5.19 x 3.27 mm
Carat Weight 0.54 CARAT
Color Grade K
Clarity Grade I 1
Cut Grade EXCELLENT
Polish VERY GOOD
Symmetry EXCELLENT
Fluorescence VERY SLIGHT
Inscription(s) IGI 537232745



July 20, 2022
IGI Report Number 537232745
NATURAL DIAMOND
ROUND BRILLIANT
5.16 - 5.19 x 3.27 mm
Carat Weight 0.54 CARAT
Color Grade K
Clarity Grade I 1
Cut Grade EXCELLENT
Polish VERY GOOD
Symmetry EXCELLENT
Fluorescence VERY SLIGHT
Inscription(s) IGI 537232745



THIS DOCUMENT WAS PRODUCED WITH THE FOLLOWING SECURITY MEASURES: SPECIAL DOCUMENT PAPER, INK SCREENS, WATERMARK, BACKGROUND DESIGN, HOLOGRAM AND OTHER SECURITY FEATURES NOT LISTED AND DO EXCEED DOCUMENT SECURITY INDUSTRY GUIDELINES.