



533296359

DIAMOND REPORT **ELECTRONIC COPY**

July 5, 2022
IGI Report Number 533296359
Description NATURAL DIAMOND
Shape and Cutting Style ROUND BRILLIANT
Measurements 10.75 - 10.83 x 6.58 mm

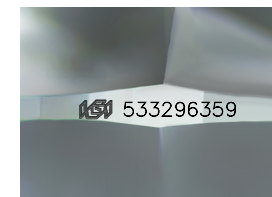
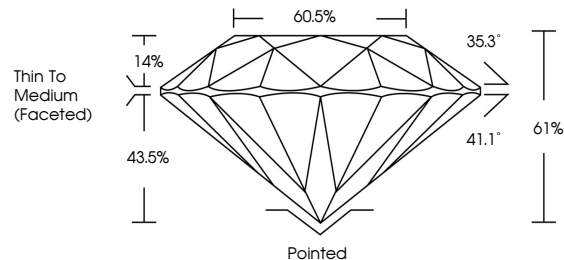
GRADING RESULTS

Carat Weight 4.73 CARATS
Color Grade I
Clarity Grade VVS 2
Cut Grade EXCELLENT

ADDITIONAL GRADING INFORMATION

Polish EXCELLENT
Symmetry EXCELLENT
Fluorescence VERY SLIGHT
Inscription(s) IGI 533296359

PROPORTIONS



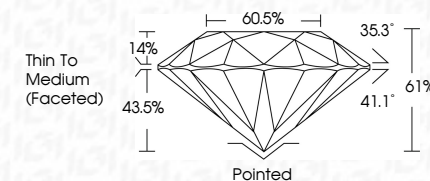
Sample Image Used



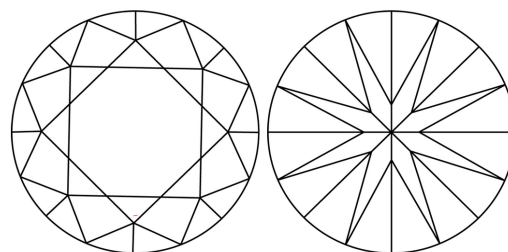
July 5, 2022
IGI Report Number 533296359
Description NATURAL DIAMOND
Shape and Cutting Style ROUND BRILLIANT
Measurements 10.75 - 10.83 x 6.58 mm

GRADING RESULTS

Carat Weight 4.73 CARATS
Color Grade I
Clarity Grade VVS 2
Cut Grade EXCELLENT



CLARITY CHARACTERISTICS



KEY TO SYMBOLS

Red symbols indicate internal characteristics.
Green symbols indicate external characteristics.

COLOR

D - F	G - J	K - M	N - R	S - Z	FANCY
Colorless	Near Colorless	Slightly Tinted	Very Light Color	Light Color	

CLARITY

IF	VS ¹⁻²	VS ¹⁻²	SI ¹⁻²	I ¹⁻³
Internally Flawless	Very Very Slightly Included	Very Slightly Included	Slightly Included	Included

ADDITIONAL GRADING INFORMATION

Polish EXCELLENT
Symmetry EXCELLENT
Fluorescence VERY SLIGHT
Inscription(s) IGI 533296359



IGI

July 5, 2022
IGI Report No 533296359
NATURAL DIAMOND
ROUND BRILLIANT
10.75 - 10.83 x 6.58 mm
Carat Weight 4.73 CARATS
Color Grade I
Clarity Grade VVS 2
Cut Grade EXCELLENT
Depth 61%
Table 60.5%
Girdle Thin To Medium (Faceted)
Culet Pointed
Polish EXCELLENT
Symmetry EXCELLENT
Fluorescence VERY SLIGHT
Inscription(s) IGI 533296359