



533211323

DIAMOND REPORT **ELECTRONIC COPY**

October 14, 2022
 IGI Report Number 533211323
 Description NATURAL DIAMOND
 Shape and Cutting Style ROUND BRILLIANT
 Measurements 14.15 - 14.25 x 8.73 mm

GRADING RESULTS

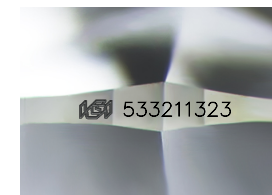
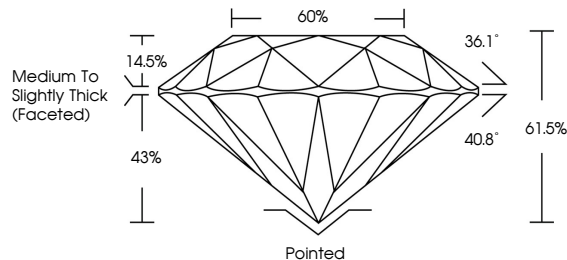
Carat Weight 11.05 CARATS
 Color Grade H
 Clarity Grade SI 2
 Cut Grade EXCELLENT

ADDITIONAL GRADING INFORMATION

Polish EXCELLENT
 Symmetry EXCELLENT
 Fluorescence STRONG
 Inscription(s) IGI 533211323



PROPORTIONS



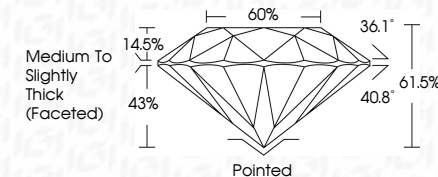
Sample Image Used



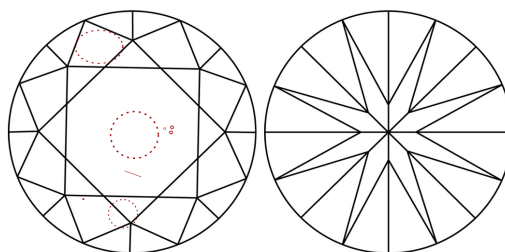
October 14, 2022
 IGI Report Number 533211323
 Description NATURAL DIAMOND
 Shape and Cutting Style ROUND BRILLIANT
 Measurements 14.15 - 14.25 x 8.73 mm

GRADING RESULTS

Carat Weight 11.05 CARATS
 Color Grade H
 Clarity Grade SI 2
 Cut Grade EXCELLENT



CLARITY CHARACTERISTICS



KEY TO SYMBOLS

Red symbols indicate internal characteristics.
 Green symbols indicate external characteristics.

COLOR

D - F	G - J	K - M	N - R	S - Z	FANCY
Colorless	Near Colorless	Slightly Tinted	Very Light Color	Light Color	

CLARITY

IF	VS ¹⁻²	VS ¹⁻²	SI ¹⁻²	I ¹⁻³
Internally Flawless	Very Very Slightly Included	Very Slightly Included	Slightly Included	Included

ADDITIONAL GRADING INFORMATION

Polish EXCELLENT
 Symmetry EXCELLENT
 Fluorescence STRONG
 Inscription(s) IGI 533211323



IGI

October 14, 2022
 IGI Report No 533211323
 NATURAL DIAMOND
 ROUND BRILLIANT
 14.15 - 14.25 x 8.73 mm
 Carat Weight 11.05 CARATS
 Color Grade H
 Clarity Grade SI 2
 Cut Grade EXCELLENT
 Depth 61.5%
 Table 60%
 Girdle Grade Medium To Slightly Thick (Faceted)
 Culet Pointed
 Polish EXCELLENT
 Symmetry EXCELLENT
 Fluorescence STRONG
 Inscription(s) IGI 533211323