



**ELECTRONIC COPY**

530202714  
Report verification at [igi.org](http://igi.org)



July 14, 2025

IGI Report Number **530202714**

Description **NATURAL DIAMOND**

Shape and Cutting Style **ROUND BRILLIANT**

Measurements **6.62 - 6.67 X 4.07 MM**

**GRADING RESULTS**

Carat Weight **1.12 CARAT**

Color Grade **J**

Clarity Grade **VVS 1**

Cut Grade **EXCELLENT**

**DIAMOND REPORT**

July 14, 2025

IGI Report Number **530202714**

Description **NATURAL DIAMOND**

Shape and Cutting Style **ROUND BRILLIANT**

Measurements **6.62 - 6.67 X 4.07 MM**

**GRADING RESULTS**

Carat Weight **1.12 CARAT**

Color Grade **J**

Clarity Grade **VVS 1**

Cut Grade **EXCELLENT**

**ADDITIONAL GRADING INFORMATION**

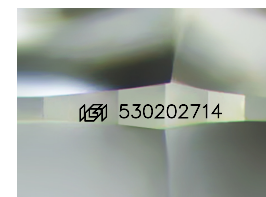
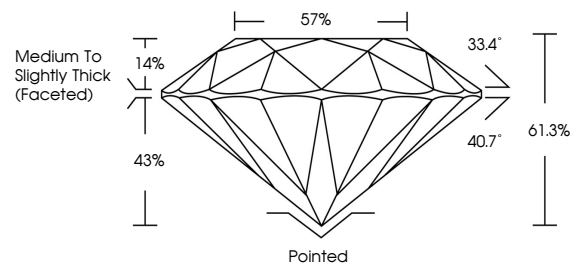
Polish **EXCELLENT**

Symmetry **EXCELLENT**

Fluorescence **NONE**

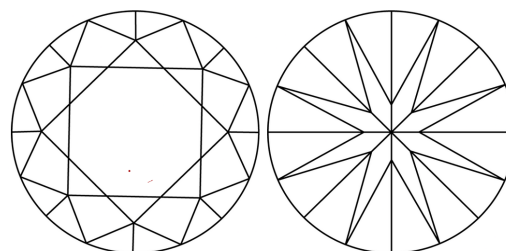
Inscription(s) **530202714**

**PROPORTIONS**



Sample Image Used

**CLARITY CHARACTERISTICS**



**KEY TO SYMBOLS**

Red symbols indicate internal characteristics.  
Green symbols indicate external characteristics.

**COLOR**

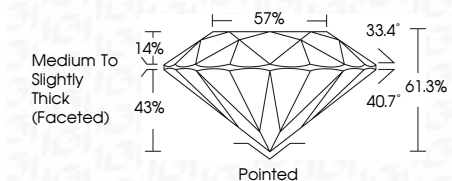
D - F      G - J      K - M      N - R      S - Z      FANCY

Colorless      Near Colorless      Slightly Tinted      Very Light Color      Light Color

**CLARITY**

IF      VVS <sup>1-2</sup>      VS <sup>1-2</sup>      SI <sup>1-2</sup>      I <sup>1-3</sup>

Internally Flawless      Very Very Slightly Included      Very Slightly Included      Slightly Included      Included



**ADDITIONAL GRADING INFORMATION**

Polish **EXCELLENT**

Symmetry **EXCELLENT**

Fluorescence **NONE**

Inscription(s) **530202714**



**IGI**



July 14, 2025  
IGI Report No 530202714  
**ROUND BRILLIANT**  
6.62 - 6.67 X 4.07 MM  
1.12 CARAT  
J  
EXCELLENT  
VVS 1  
EXCELLENT  
61.3%  
57%  
Medium To Slightly Thick (Faceted)  
Pointed  
EXCELLENT  
EXCELLENT  
NONE  
IGI 530202714