



529253246

DIAMOND REPORT **ELECTRONIC COPY**

June 21, 2022
 IGI Report Number 529253246
 Description NATURAL DIAMOND
 Shape and Cutting Style ROUND BRILLIANT
 Measurements 8.63 - 8.70 x 5.38 mm

GRADING RESULTS

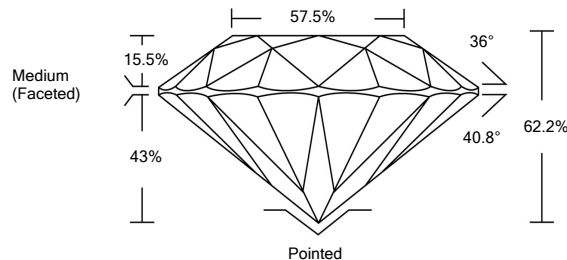
Carat Weight 2.50 CARATS
 Color Grade I
 Clarity Grade VVS 1
 Cut Grade EXCELLENT

ADDITIONAL GRADING INFORMATION

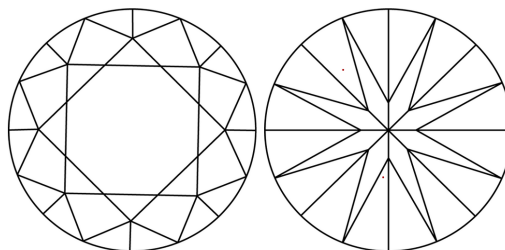
Polish EXCELLENT
 Symmetry EXCELLENT
 Fluorescence NONE
 Inscription(s) IGI 529253246
 Comments: IDEAL CUT ROUND BRILLIANT



PROPORTIONS

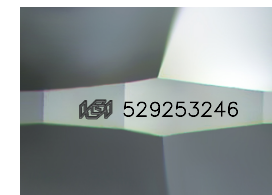


CLARITY CHARACTERISTICS



KEY TO SYMBOLS

Red symbols indicate internal characteristics.
 Green symbols indicate external characteristics.



Sample Image Used

COLOR

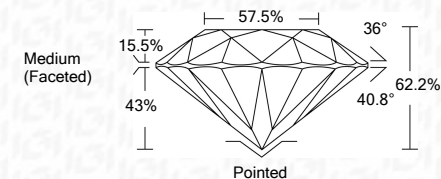
D - F	G - J	K - M	N - R	S - Z	FANCY
Colorless	Near Colorless	Slightly Tinted	Very Light Color	Light Color	

CLARITY

IF	VS ¹⁻²	VS ¹⁻²	SI ¹⁻²	I ¹⁻³
Internally Flawless	Very Very Slightly Included	Very Slightly Included	Slightly Included	Included



June 21, 2022
 IGI Report Number 529253246
 Description NATURAL DIAMOND
 Shape and Cutting Style ROUND BRILLIANT
 Measurements 8.63 - 8.70 x 5.38 mm
GRADING RESULTS
 Carat Weight 2.50 CARATS
 Color Grade I
 Clarity Grade VVS 1
 Cut Grade EXCELLENT



ADDITIONAL GRADING INFORMATION

Polish EXCELLENT
 Symmetry EXCELLENT
 Fluorescence NONE
 Inscription(s) IGI 529253246
 Comments: IDEAL CUT ROUND BRILLIANT



IGI

June 21, 2022
 IGI Report No 529253246
 NATURAL DIAMOND
 ROUND BRILLIANT
 8.63 - 8.70 x 5.38 mm
 Carat Weight 2.50 CARATS
 Color Grade I
 Clarity Grade VVS 1
 Cut Grade EXCELLENT
 Depth 62.2%
 Table 57.5%
 Girdle Medium (Faceted)
 Culet Pointed
 Polish EXCELLENT
 Symmetry EXCELLENT
 Fluorescence NONE
 Inscription(s) IGI 529253246
 Comments: IDEAL CUT ROUND BRILLIANT