



528231106

**DIAMOND REPORT**      **ELECTRONIC COPY**

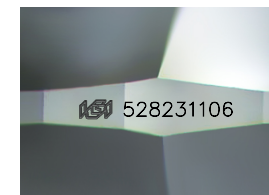
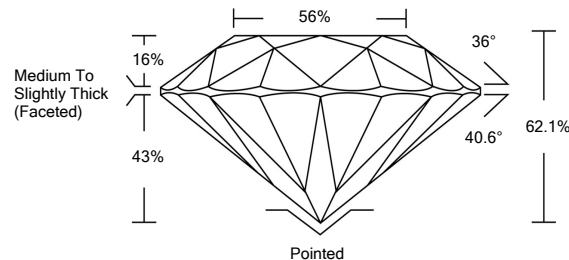
May 24, 2022  
 IGI Report Number      528231106  
 Description      NATURAL DIAMOND  
 Shape and Cutting Style      ROUND BRILLIANT  
 Measurements      6.88 - 6.93 x 4.29 mm

**GRADING RESULTS**  
 Carat Weight      1.26 CARAT  
 Color Grade      L  
 Clarity Grade      INTERNALLY FLAWLESS  
 Cut Grade      EXCELLENT

**ADDITIONAL GRADING INFORMATION**  
 Polish      EXCELLENT  
 Symmetry      EXCELLENT  
 Fluorescence      NONE  
 Inscription(s)      IGI 528231106  
 Comments: IDEAL CUT ROUND BRILLIANT



**PROPORTIONS**

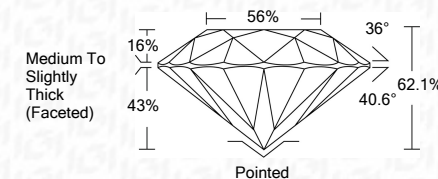


Sample Image Used

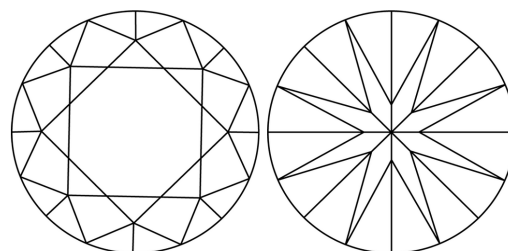


May 24, 2022  
 IGI Report Number      528231106  
 Description      NATURAL DIAMOND  
 Shape and Cutting Style      ROUND BRILLIANT  
 Measurements      6.88 - 6.93 x 4.29 mm

**GRADING RESULTS**  
 Carat Weight      1.26 CARAT  
 Color Grade      L  
 Clarity Grade      INTERNALLY FLAWLESS  
 Cut Grade      EXCELLENT



**CLARITY CHARACTERISTICS**



**KEY TO SYMBOLS**

Red symbols indicate internal characteristics.  
 Green symbols indicate external characteristics.

**COLOR**

D - F	G - J	K - M	N - R	S - Z	FANCY
Colorless	Near Colorless	Slightly Tinted	Very Light Color	Light Color	

**CLARITY**

IF	VS <sup>1-2</sup>	VS <sup>1-2</sup>	SI <sup>1-2</sup>	I <sup>1-3</sup>
Internally Flawless	Very Very Slightly Included	Very Slightly Included	Slightly Included	Included

**ADDITIONAL GRADING INFORMATION**

Polish      EXCELLENT  
 Symmetry      EXCELLENT  
 Fluorescence      NONE  
 Inscription(s)      IGI 528231106  
 Comments: IDEAL CUT ROUND BRILLIANT



**IGI**

May 24, 2022  
 IGI Report No 528231106  
 NATURAL DIAMOND  
 ROUND BRILLIANT  
 6.88 - 6.93 x 4.29 mm  
 Carat Weight      1.26 CARAT  
 Color Grade      L  
 Clarity Grade      IF  
 Cut Grade      EXCELLENT  
 Depth      62.1%  
 Table      56%  
 Girdle      Medium To Slightly Thick (Faceted)  
 Culet      Pointed  
 Polish      EXCELLENT  
 Symmetry      EXCELLENT  
 Fluorescence      NONE  
 Inscription(s)      IGI 528231106  
 Comments: IDEAL CUT ROUND BRILLIANT

