



526253561

DIAMOND REPORT ELECTRONIC COPY

May 2, 2022
IGI Report Number 526253561
Description NATURAL DIAMOND
Shape and Cutting Style ROUND BRILLIANT
Measurements 7.36 - 7.39 x 4.52 mm

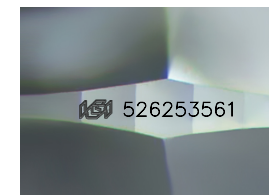
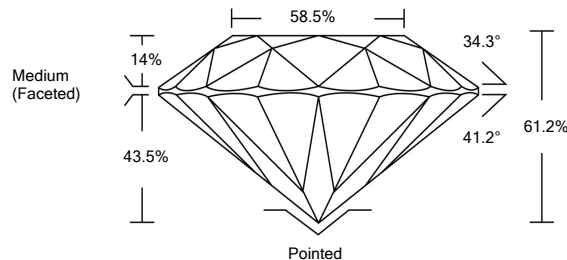
GRADING RESULTS

Carat Weight 1.51 CARAT
Color Grade J
Clarity Grade I 1
Cut Grade EXCELLENT

ADDITIONAL GRADING INFORMATION

Polish EXCELLENT
Symmetry EXCELLENT
Fluorescence NONE
Inscription(s) IGI 526253561
Comments: IDEAL CUT ROUND BRILLIANT

PROPORTIONS



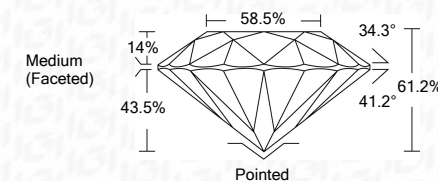
Sample Image Used



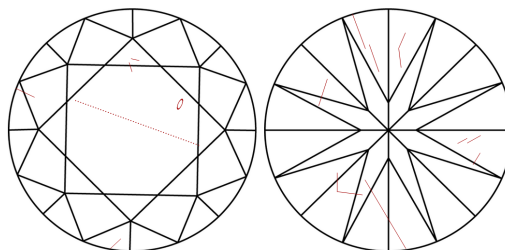
May 2, 2022
IGI Report Number 526253561
Description NATURAL DIAMOND
Shape and Cutting Style ROUND BRILLIANT
Measurements 7.36 - 7.39 x 4.52 mm

GRADING RESULTS

Carat Weight 1.51 CARAT
Color Grade J
Clarity Grade I 1
Cut Grade EXCELLENT



CLARITY CHARACTERISTICS



KEY TO SYMBOLS

Red symbols indicate internal characteristics.
Green symbols indicate external characteristics.

COLOR

Table with 6 columns: D - F, G - J, K - M, N - R, S - Z, FANCY. Row 1: Colorless, Near Colorless, Slightly Tinted, Very Light Color, Light Color

CLARITY

Table with 5 columns: IF, VS 1-2, VS 1-2, SI 1-2, I 1-3. Row 1: Internally Flawless, Very Very Slightly Included, Very Slightly Included, Slightly Included, Included

ADDITIONAL GRADING INFORMATION

Polish EXCELLENT
Symmetry EXCELLENT
Fluorescence NONE
Inscription(s) IGI 526253561
Comments: IDEAL CUT ROUND BRILLIANT



IGI

May 2, 2022
IGI Report No 526253561
NATURAL DIAMOND
ROUND BRILLIANT
7.36 - 7.39 x 4.52 mm
Carat Weight 1.51 CARAT
Color Grade J
Clarity Grade I 1
Cut Grade EXCELLENT
Depth 61.2%
Table 58.5%
Girdle Medium (faceted)
Culet Pointed
Polish EXCELLENT
Symmetry EXCELLENT
Fluorescence NONE
Inscription(s) IGI 526253561
Comments: IDEAL CUT ROUND BRILLIANT

