



523285302

DIAMOND REPORT **ELECTRONIC COPY**

April 21, 2022
 IGI Report Number 523285302
 Description NATURAL DIAMOND
 Shape and Cutting Style ROUND BRILLIANT
 Measurements 7.10 - 7.17 x 4.50 mm

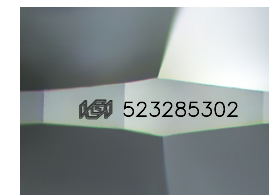
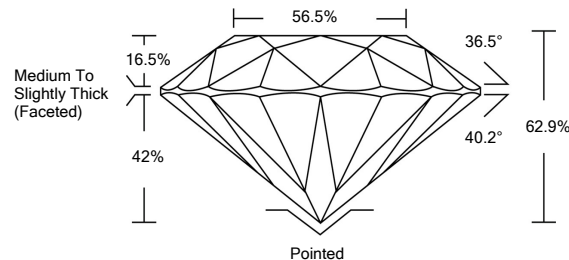
GRADING RESULTS

Carat Weight 1.45 CARAT
 Color Grade J
 Clarity Grade INTERNALLY FLAWLESS
 Cut Grade EXCELLENT

ADDITIONAL GRADING INFORMATION

Polish EXCELLENT
 Symmetry EXCELLENT
 Fluorescence NONE
 Inscription(s) IGI 523285302

PROPORTIONS



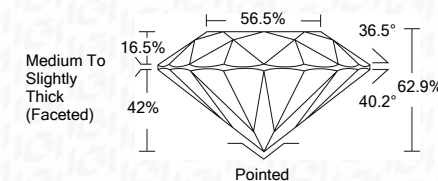
Sample Image Used



April 21, 2022
 IGI Report Number 523285302
 Description NATURAL DIAMOND
 Shape and Cutting Style ROUND BRILLIANT
 Measurements 7.10 - 7.17 x 4.50 mm

GRADING RESULTS

Carat Weight 1.45 CARAT
 Color Grade J
 Clarity Grade INTERNALLY FLAWLESS
 Cut Grade EXCELLENT



CLARITY CHARACTERISTICS



COLOR

D - F	G - J	K - M	N - R	S - Z	FANCY
Colorless	Near Colorless	Slightly Tinted	Very Light Color	Light Color	

CLARITY

IF	VS ¹⁻²	VS ¹⁻²	SI ¹⁻²	I ¹⁻³
Internally Flawless	Very Very Slightly Included	Very Slightly Included	Slightly Included	Included

KEY TO SYMBOLS

Red symbols indicate internal characteristics.
 Green symbols indicate external characteristics.



ADDITIONAL GRADING INFORMATION

Polish EXCELLENT
 Symmetry EXCELLENT
 Fluorescence NONE
 Inscription(s) IGI 523285302



IGI

April 21, 2022
 IGI Report No 523285302
 NATURAL DIAMOND
 ROUND BRILLIANT
 7.10 - 7.17 x 4.50 mm
 Carat Weight 1.45 CARAT
 Color Grade J
 Clarity Grade IF
 Cut Grade EXCELLENT
 Depth 62.9%
 Table 56.5%
 Girdle Medium To Slightly Thick (Faceted)
 Culet Pointed
 Polish EXCELLENT
 Symmetry EXCELLENT
 Fluorescence NONE
 Inscription(s) IGI 523285302

