

INTERNATIONAL
GEMOLOGICAL
INSTITUTE

DIAMOND REPORT

ELECTRONIC COPY

February 23, 2022

IGI Report Number516254538

DescriptionNATURAL DIAMOND

Shape and Cutting StyleROUND BRILLIANT

Measurements7.69 - 7.77 x 4.80 mm

GRADING RESULTS

Carat Weight1.80 CARAT

Color GradeG

Clarity GradeVVS 2

Cut GradeEXCELLENT

ADDITIONAL GRADING INFORMATION


PolishEXCELLENT

SymmetryEXCELLENT

FluorescenceNONE

Inscription(s)IGI 516254538

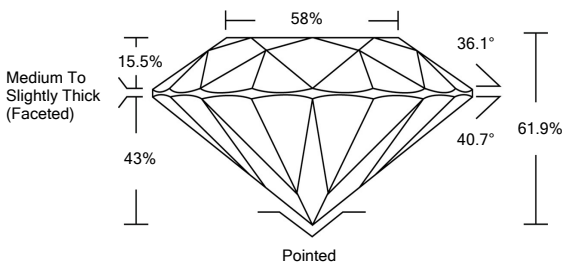
Comments: IDEAL CUT ROUND BRILLIANT



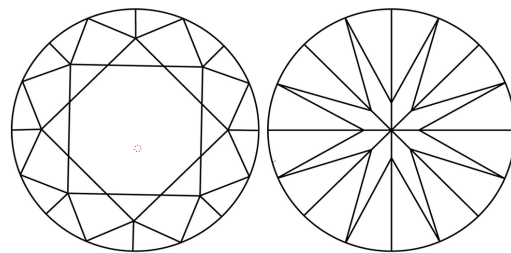
www.igi.org

516254538

PROPORTIONS

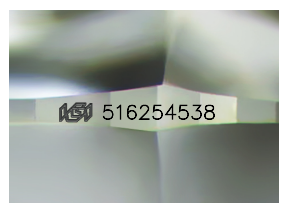


CLARITY CHARACTERISTICS



KEY TO SYMBOLS

Red symbols indicate internal characteristics.
Green symbols indicate external characteristics.



Sample Image Used

COLOR

D - F	G - J	K - M	N - R	S - Z	FANCY
Colorless	Near Colorless	Slightly Tinted	Very Light Color	Light Color	

CLARITY

IF	VS ¹⁻²	VS ¹⁻²	SI ¹⁻²	I ¹⁻³
Internally Flawless	Very Very Slightly Included	Very Slightly Included	Slightly Included	Included

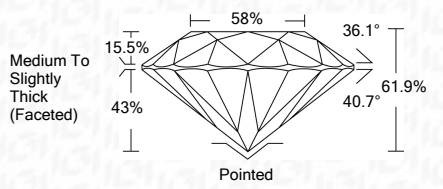
DIAMOND REPORT



February 23, 2022
IGI Report Number516254538
DescriptionNATURAL DIAMOND
Shape and Cutting StyleROUND BRILLIANT
Measurements7.69 - 7.77 x 4.80 mm

GRADING RESULTS

Carat Weight1.80 CARAT
Color GradeG
Clarity GradeVVS 2
Cut GradeEXCELLENT



ADDITIONAL GRADING INFORMATION

PolishEXCELLENT
SymmetryEXCELLENT
FluorescenceNONE
Inscription(s)IGI 516254538
Comments: IDEAL CUT ROUND BRILLIANT



IGI

February 23, 2022	IGI Report No 516254538	NATURAL DIAMOND	ROUND BRILLIANT	7.69 - 7.77 x 4.80 mm	1.80 CARAT	G	VVS2	EXCELLENT	61.9%	58%	Medium To Slightly Thick (Faceted)	Pointed	EXCELLENT	EXCELLENT	NONE	IGI 516254538	Comments: IDEAL CUT ROUND BRILLIANT
-------------------	-------------------------	-----------------	-----------------	-----------------------	------------	---	------	-----------	-------	-----	------------------------------------	---------	-----------	-----------	------	---------------	-------------------------------------