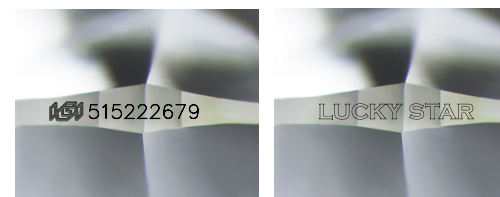
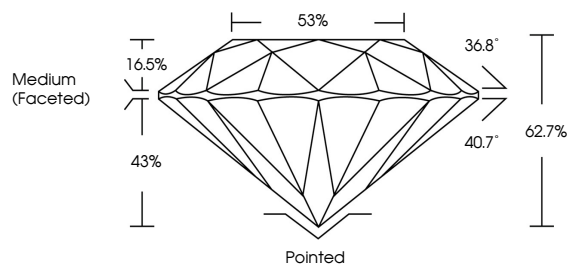




DIAMOND REPORT **ELECTRONIC COPY**

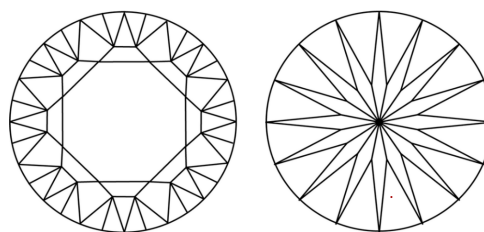
515222679

PROPORTIONS



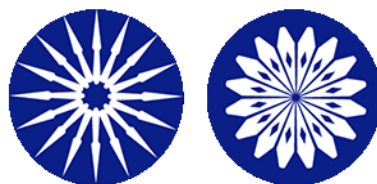
Sample Images Used

CLARITY CHARACTERISTICS



KEY TO SYMBOLS

Red symbols indicate internal characteristics.
Green symbols indicate external characteristics.



April 11, 2022
IGI Report Number 515222679
Description NATURAL DIAMOND
Shape and Cutting Style ROUND MODIFIED BRILLIANT
Measurements 5.41 - 5.43 x 3.40 mm

GRADING RESULTS

Carat Weight 0.61 CARAT
Color Grade G
Clarity Grade VVS 1
Cut Grade EXCELLENT

ADDITIONAL GRADING INFORMATION

Polish EXCELLENT
Symmetry EXCELLENT
Fluorescence NONE
Inscription(s) IGI 515222679
LUCKY STAR

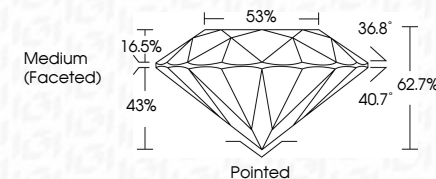
Comments: This diamond displays a pattern of sixteen arrows visible through the crown.



April 11, 2022
IGI Report Number 515222679
Description NATURAL DIAMOND
Shape and Cutting Style ROUND MODIFIED BRILLIANT
Measurements 5.41 - 5.43 x 3.40 mm

GRADING RESULTS

Carat Weight 0.61 CARAT
Color Grade G
Clarity Grade VVS 1
Cut Grade EXCELLENT



ADDITIONAL GRADING INFORMATION

Polish EXCELLENT
Symmetry EXCELLENT
Fluorescence NONE
Inscription(s) IGI 515222679
LUCKY STAR

Comments: This diamond displays a pattern of sixteen arrows visible through the crown.



IGI

April 11, 2022
IGI Report No 515222679
NATURAL DIAMOND
ROUND MODIFIED BRILLIANT
5.41 - 5.43 x 3.40 mm
Carat Weight 0.61 CARAT
Color Grade G
Clarity Grade VVS 1
Cut Grade EXCELLENT
Depth 62.7%
Table 53%
Girdle Medium (Faceted)
Culet Pointed
Polish EXCELLENT
Symmetry EXCELLENT
Fluorescence NONE
Inscription(s) IGI 515222679
LUCKY STAR
Comments: This diamond displays a pattern of sixteen arrows visible through the crown.

