



INTERNATIONAL GEMOLOGICAL INSTITUTE

DIAMOND REPORT

ELECTRONIC COPY

February 9, 2022
IGI Report Number 515201548
Description NATURAL DIAMOND
Shape and Cutting Style ROUND BRILLIANT
Measurements 5.72 - 5.76 x 3.57 mm

GRADING RESULTS

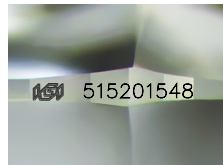
Carat Weight 0.72 CARAT
Color Grade I
Clarity Grade VS 1
Cut Grade EXCELLENT

ADDITIONAL GRADING INFORMATION

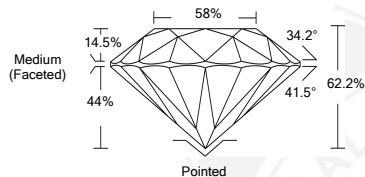
Polish EXCELLENT
Symmetry EXCELLENT
Fluorescence NONE
Identification Features CRYSTAL, NEEDLE
Inscription(s) IGI 515201548
Comments: IDEAL CUT ROUND BRILLIANT



515201548



Sample Image Used



COLOR

| D - F | G - J | K - M | N - R | S - Z | FANCY |
|-----------|----------------|-----------------|------------------|-------------|-------|
| Colorless | Near Colorless | Slightly Tinted | Very Light Color | Light Color | |

CLARITY

| IF | VS ¹⁻² | VS ¹⁻² | SI ¹⁻² | I ¹⁻² |
|---------------------|-----------------------------|------------------------|-------------------|------------------|
| Internally Flawless | Very Very Slightly Included | Very Slightly Included | Slightly Included | Included |



February 9, 2022
IGI Report Number 515201548
NATURAL DIAMOND
ROUND BRILLIANT
5.72 - 5.76 x 3.57 mm
Carat Weight 0.72 CARAT
Color Grade I
Clarity Grade VS 1
Cut Grade EXCELLENT
Polish EXCELLENT
Symmetry EXCELLENT
Fluorescence NONE
Inscription(s) IGI 515201548
Comments: IDEAL CUT ROUND BRILLIANT



February 9, 2022
IGI Report Number 515201548
NATURAL DIAMOND
ROUND BRILLIANT
5.72 - 5.76 x 3.57 mm
Carat Weight 0.72 CARAT
Color Grade I
Clarity Grade VS 1
Cut Grade EXCELLENT
Polish EXCELLENT
Symmetry EXCELLENT
Fluorescence NONE
Inscription(s) IGI 515201548
Comments: IDEAL CUT ROUND BRILLIANT

