



INTERNATIONAL GEMOLOGICAL INSTITUTE

DIAMOND REPORT

ELECTRONIC COPY

February 7, 2022
IGI Report Number 512240403
Description NATURAL DIAMOND
Shape and Cutting Style ROUND BRILLIANT
Measurements 5.89 - 5.92 x 3.69 mm

GRADING RESULTS

Carat Weight 0.80 CARAT
Color Grade I
Clarity Grade VS 2
Cut Grade EXCELLENT

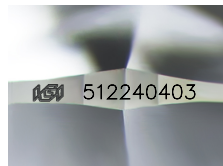
ADDITIONAL GRADING INFORMATION

Polish EXCELLENT
Symmetry EXCELLENT
Fluorescence NONE

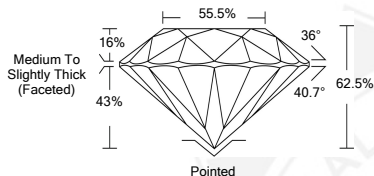
Identification Features CLOUD, CRYSTAL, FEATHER
Inscription(s) IGI 512240403
Comments: IDEAL CUT ROUND BRILLIANT



512240403



Sample Image Used



COLOR

D - F	G - J	K - M	N - R	S - Z	FANCY
Colorless	Near Colorless	Slightly Tinted	Very Light Color	Light Color	

CLARITY

IF	VS ¹⁻²	VS ¹⁻²	SI ¹⁻²	I ¹⁻²
Internally Flawless	Very Very Slightly Included	Very Slightly Included	Slightly Included	Included



February 7, 2022
IGI Report Number 512240403
NATURAL DIAMOND
ROUND BRILLIANT
5.89 - 5.92 x 3.69 mm
Carat Weight 0.80 CARAT
Color Grade I
Clarity Grade VS 2
Cut Grade EXCELLENT
Polish EXCELLENT
Symmetry EXCELLENT
Fluorescence NONE
Inscription(s) IGI 512240403
Comments: IDEAL CUT ROUND BRILLIANT



February 7, 2022
IGI Report Number 512240403
NATURAL DIAMOND
ROUND BRILLIANT
5.89 - 5.92 x 3.69 mm
Carat Weight 0.80 CARAT
Color Grade I
Clarity Grade VS 2
Cut Grade EXCELLENT
Polish EXCELLENT
Symmetry EXCELLENT
Fluorescence NONE
Inscription(s) IGI 512240403
Comments: IDEAL CUT ROUND BRILLIANT

