



502181138

DIAMOND REPORT ELECTRONIC COPY

January 21, 2022
IGI Report Number 502181138
Description NATURAL DIAMOND
Shape and Cutting Style ROUND MODIFIED BRILLIANT
Measurements 6.39 - 6.43 x 3.98 mm

GRADING RESULTS

Carat Weight 1.00 CARAT
Color Grade G
Clarity Grade VVS 1
Cut Grade EXCELLENT

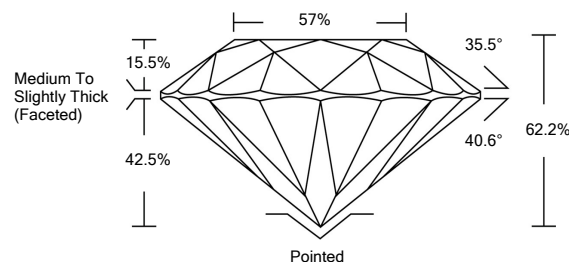
ADDITIONAL GRADING INFORMATION

Polish EXCELLENT
Symmetry EXCELLENT
Fluorescence VERY SLIGHT
Inscription(s) IGI 502181138
LUCKY STAR

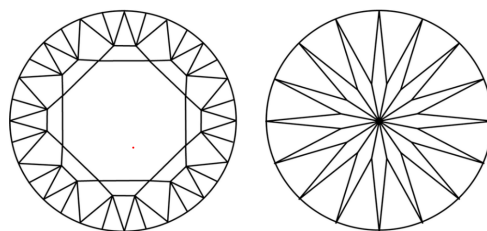
Comments: This diamond displays a pattern of sixteen arrows visible through the crown



PROPORTIONS

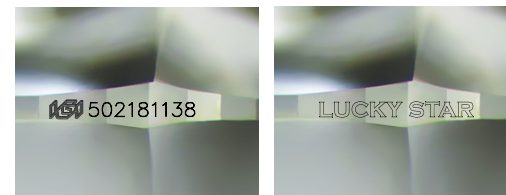
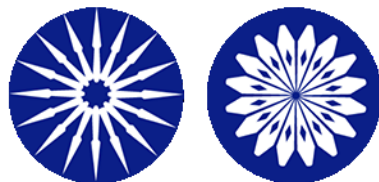


CLARITY CHARACTERISTICS



KEY TO SYMBOLS

Red symbols indicate internal characteristics.
Green symbols indicate external characteristics.



Sample Images Used

COLOR

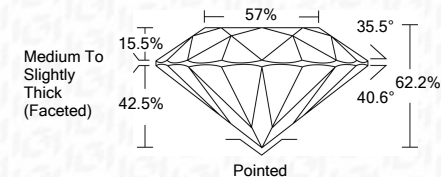
Table with columns D-F, G-J, K-M, N-R, S-Z, FANCY and rows Colorless, Near Colorless, Slightly Tinted, Very Light Color, Light Color.

CLARITY

Table with columns IF, VS 1-2, VS 1-2, SI 1-2, I 1-3 and rows Internally Flawless, Very Very Slightly Included, Very Slightly Included, Slightly Included, Included.



January 21, 2022
IGI Report Number 502181138
Description NATURAL DIAMOND
Shape and Cutting Style ROUND MODIFIED BRILLIANT
Measurements 6.39 - 6.43 x 3.98 mm
GRADING RESULTS
Carat Weight 1.00 CARAT
Color Grade G
Clarity Grade VVS 1
Cut Grade EXCELLENT



ADDITIONAL GRADING INFORMATION

Polish EXCELLENT
Symmetry EXCELLENT
Fluorescence VERY SLIGHT
Inscription(s) IGI 502181138
LUCKY STAR

Comments: This diamond displays a pattern of sixteen arrows visible through the crown



IGI

January 21, 2022
IGI Report No 502181138
NATURAL DIAMOND
ROUND MODIFIED BRILLIANT
6.39 - 6.43 x 3.98 mm
Carat Weight 1.00 CARAT
Color Grade G
Clarity Grade VVS 1
Cut Grade EXCELLENT
Depth 62.2%
Table 57%
Girdle Medium To Slightly Thick (Faceted)
Culet Pointed
Polish EXCELLENT
Symmetry EXCELLENT
Fluorescence VERY SLIGHT
Inscription(s) IGI 502181138
LUCKY STAR
Comments: This diamond displays a pattern of sixteen arrows visible through the crown

