

December 14, 2021

IGI Report Number502180779

DescriptionNATURAL DIAMOND

Shape and Cutting StyleROUND MODIFIED BRILLIANT

Measurements5.19 - 5.21 x 3.21 mm

GRADING RESULTS

Carat Weight0.52 CARAT

Color GradeG

Clarity GradeVVS 2

Cut GradeEXCELLENT

ADDITIONAL GRADING INFORMATION

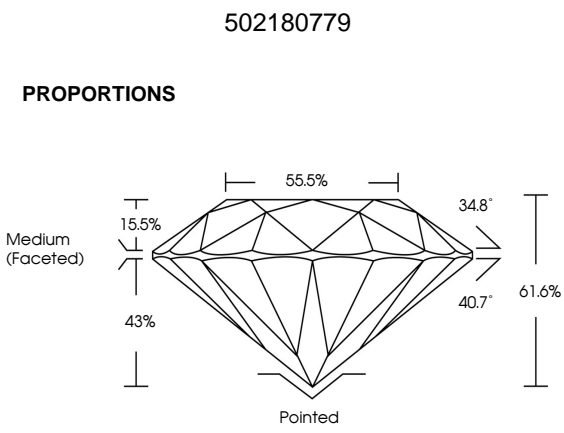
PolishEXCELLENT

SymmetryEXCELLENT

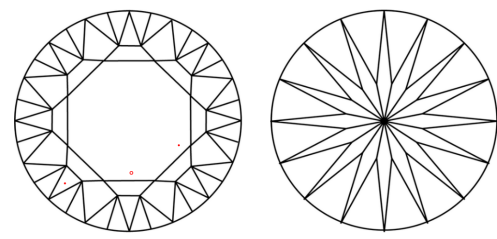
FluorescenceNONE

Inscription(s)IGI 502180779
LUCKY STAR

Comments: This diamond displays a pattern of sixteen arrows visible through the crown.

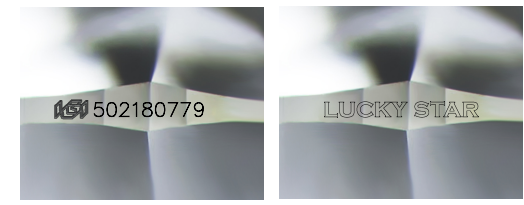
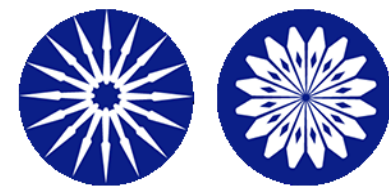


CLARITY CHARACTERISTICS



KEY TO SYMBOLS

Red symbols indicate internal characteristics.
Green symbols indicate external characteristics.



Sample Images Used


COLOR

D - F	G - J	K - M	N - R	S - Z	FANCY
Colorless	Near Colorless	Slightly Tinted	Very Light Color	Light Color	

CLARITY

IF	VS ¹⁻²	VS ¹⁻²	SI ¹⁻²	I ¹⁻³
Internally Flawless	Very Very Slightly Included	Very Slightly Included	Slightly Included	Included

DIAMOND REPORT



December 14, 2021

IGI Report Number502180779

DescriptionNATURAL DIAMOND

Shape and Cutting StyleROUND MODIFIED BRILLIANT

Measurements5.19 - 5.21 x 3.21 mm

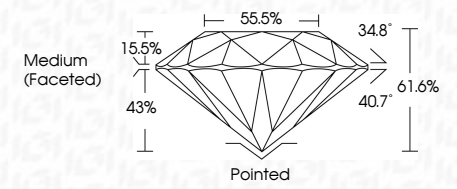
GRADING RESULTS

Carat Weight0.52 CARAT

Color GradeG

Clarity GradeVVS 2

Cut GradeEXCELLENT



ADDITIONAL GRADING INFORMATION

PolishEXCELLENT

SymmetryEXCELLENT

FluorescenceNONE

Inscription(s)IGI 502180779
LUCKY STAR

Comments: This diamond displays a pattern of sixteen arrows visible through the crown.



December 14, 2021

IGI Report No 502180779

NATURAL DIAMOND

ROUND MODIFIED BRILLIANT

5.19 - 5.21 x 3.21 mm

Carat Weight0.52 CARAT

Color GradeG

Clarity GradeVVS 2

Cut GradeEXCELLENT

Depth61.6%

Table55.5%

GirdleMedium (Faceted)

CuletPointed

PolishEXCELLENT

SymmetryEXCELLENT

FluorescenceNONE

Inscription(s)IGI 502180779
LUCKY STAR

Comments: This diamond displays a pattern of sixteen arrows visible through the crown.