



499129808

DIAMOND REPORT ELECTRONIC COPY



April 4, 2024
IGI Report Number 499129808
Description NATURAL DIAMOND
Shape and Cutting Style ROUND BRILLIANT
Measurements 6.55 - 6.61 x 4.12 mm

GRADING RESULTS

Carat Weight 1.11 CARAT
Color Grade J
Clarity Grade INTERNALLY FLAWLESS
Cut Grade EXCELLENT

April 4, 2024
IGI Report Number 499129808
Description NATURAL DIAMOND
Shape and Cutting Style ROUND BRILLIANT
Measurements 6.55 - 6.61 x 4.12 mm

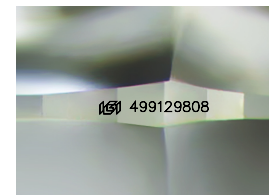
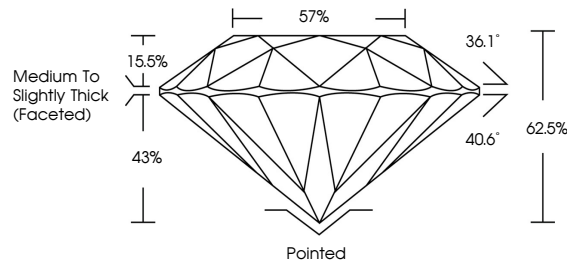
GRADING RESULTS

Carat Weight 1.11 CARAT
Color Grade J
Clarity Grade INTERNALLY FLAWLESS
Cut Grade EXCELLENT

ADDITIONAL GRADING INFORMATION

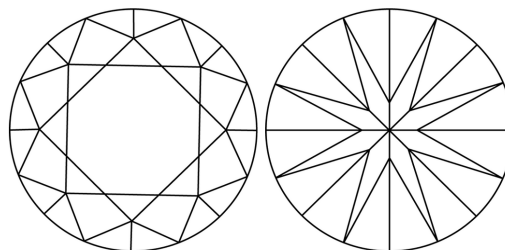
Polish EXCELLENT
Symmetry EXCELLENT
Fluorescence NONE
Inscription(s) IGI 499129808
Comments: IDEAL CUT ROUND BRILLIANT

PROPORTIONS



Sample Image Used

CLARITY CHARACTERISTICS



KEY TO SYMBOLS

Red symbols indicate internal characteristics.
Green symbols indicate external characteristics.

COLOR

Table with columns: D - F, G - J, K - M, N - R, S - Z, FANCY. Row: Colorless, Near Colorless, Slightly Tinted, Very Light Color, Light Color.

CLARITY

Table with columns: IF, VS 1-2, VS 1-2, SI 1-2, I 1-3. Row: Internally Flawless, Very Very Slightly Included, Very Slightly Included, Slightly Included, Included.

ADDITIONAL GRADING INFORMATION

Polish EXCELLENT
Symmetry EXCELLENT
Fluorescence NONE
Inscription(s) IGI 499129808
Comments: IDEAL CUT ROUND BRILLIANT



IGI

April 4, 2024
IGI Report No. 499129808
NATURAL DIAMOND
ROUND BRILLIANT
6.55 - 6.61 x 4.12 mm
Carat Weight 1.11 CARAT
Color Grade J
Clarity Grade EXCELLENT
Cut Grade EXCELLENT
Depth 62.5%
Table 57%
Girdle Medium To Slightly Thick (Faceted)
Culet Pointed
Polish EXCELLENT
Symmetry EXCELLENT
Fluorescence NONE
Inscription(s) IGI 499129808
Comments: IDEAL CUT ROUND BRILLIANT