



496112593

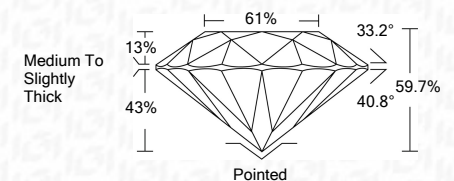
**DIAMOND REPORT**      **ELECTRONIC COPY**



October 14, 2021  
 IGI Report Number 496112593  
 Description NATURAL DIAMOND  
 Shape and Cutting Style ROUND BRILLIANT  
 Measurements 7.14 - 7.15 x 4.27 mm

**GRADING RESULTS**

Carat Weight 1.35 CARAT  
 Color Grade K  
 Clarity Grade VVS 2  
 Cut Grade EXCELLENT



October 14, 2021  
 IGI Report Number 496112593  
 Description NATURAL DIAMOND  
 Shape and Cutting Style ROUND BRILLIANT  
 Measurements 7.14 - 7.15 x 4.27 mm

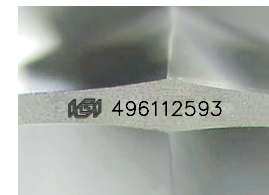
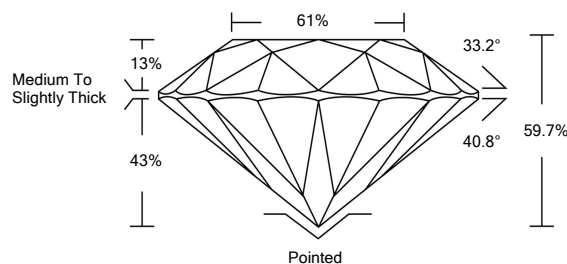
**GRADING RESULTS**

Carat Weight 1.35 CARAT  
 Color Grade K  
 Clarity Grade VVS 2  
 Cut Grade EXCELLENT

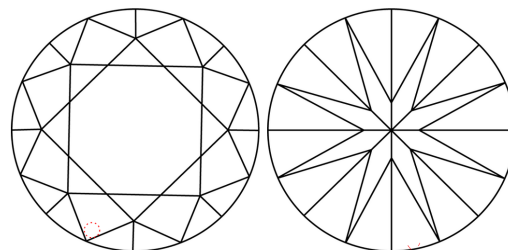
**ADDITIONAL GRADING INFORMATION**

Polish EXCELLENT  
 Symmetry EXCELLENT  
 Fluorescence STRONG  
 Inscription(s) IGI 496112593

**PROPORTIONS**



**CLARITY CHARACTERISTICS**



**KEY TO SYMBOLS**

Red symbols indicate internal characteristics.  
 Green symbols indicate external characteristics.

**COLOR**

D - F	G - J	K - M	N - R	S - Z	FANCY
Colorless	Near Colorless	Slightly Tinted	Very Light Color	Light Color	

**CLARITY**

IF	VS <sup>1-2</sup>	VS <sup>1-2</sup>	SI <sup>1-2</sup>	I <sup>1-3</sup>
Internally Flawless	Very Very Slightly Included	Very Slightly Included	Slightly Included	Included

**ADDITIONAL GRADING INFORMATION**

Polish EXCELLENT  
 Symmetry EXCELLENT  
 Fluorescence STRONG  
 Inscription(s) IGI 496112593



**IGI**



October 14, 2021  
 IGI Report No 496112593  
 NATURAL DIAMOND  
 ROUND BRILLIANT  
 7.14 - 7.15 x 4.27 mm  
 Carat Weight 1.35 CARAT  
 Color Grade K  
 Clarity Grade VVS 2  
 Cut Grade EXCELLENT  
 Depth 59.7%  
 Table 61%  
 Girdle Medium To Slightly Thick  
 Culet Pointed  
 Polish EXCELLENT  
 Symmetry EXCELLENT  
 Fluorescence STRONG  
 Inscription(s) IGI 496112593

