



487104519

DIAMOND REPORT **ELECTRONIC COPY**

October 12, 2021
 IGI Report Number 487104519
 Description NATURAL DIAMOND
 Shape and Cutting Style ROUND BRILLIANT
 Measurements 6.47 - 6.52 x 4.03 mm

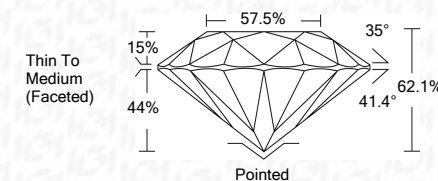
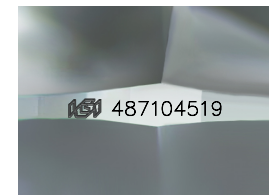
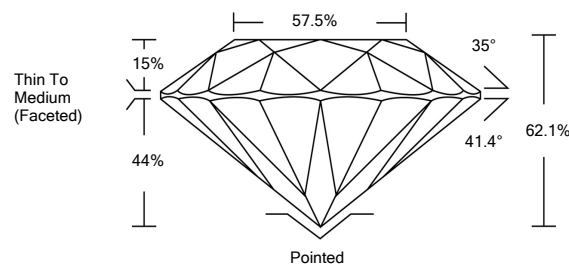
GRADING RESULTS

Carat Weight 1.03 CARAT
 Color Grade G
 Clarity Grade VS 1
 Cut Grade EXCELLENT

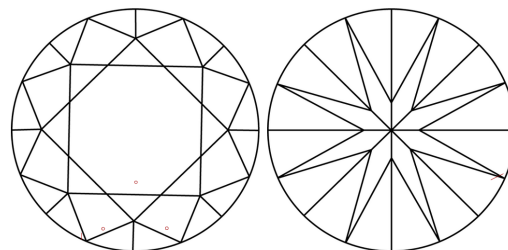
ADDITIONAL GRADING INFORMATION

Polish EXCELLENT
 Symmetry EXCELLENT
 Fluorescence SLIGHT
 Inscription(s) IGI 487104519
 Comments: IDEAL CUT ROUND BRILLIANT
 Faint Yellowish Green

PROPORTIONS



CLARITY CHARACTERISTICS



KEY TO SYMBOLS

Red symbols indicate internal characteristics.
 Green symbols indicate external characteristics.

COLOR

D - F	G - J	K - M	N - R	S - Z	FANCY
Colorless	Near Colorless	Slightly Tinted	Very Light Color	Light Color	

CLARITY

IF	VS ¹⁻²	VS ¹⁻²	SI ¹⁻²	I ¹⁻³
Internally Flawless	Very Very Slightly Included	Very Slightly Included	Slightly Included	Included



October 12, 2021
 IGI Report Number 487104519
 Description NATURAL DIAMOND
 Shape and Cutting Style ROUND BRILLIANT
 Measurements 6.47 - 6.52 x 4.03 mm

GRADING RESULTS

Carat Weight 1.03 CARAT
 Color Grade G
 Clarity Grade VS 1
 Cut Grade EXCELLENT

ADDITIONAL GRADING INFORMATION

Polish EXCELLENT
 Symmetry EXCELLENT
 Fluorescence SLIGHT
 Inscription(s) IGI 487104519
 Comments: IDEAL CUT ROUND BRILLIANT
 Faint Yellowish Green



IGI

October 12, 2021
 IGI Report No 487104519
 NATURAL DIAMOND
 ROUND BRILLIANT
 6.47 - 6.52 x 4.03 mm
 Carat Weight 1.03 CARAT
 Color Grade G
 Clarity Grade VS 1
 Cut Grade EXCELLENT
 Depth 62.1%
 Table 57.5%
 Girdle Thin To Medium (Faceted)
 Culet Pointed
 Polish EXCELLENT
 Symmetry EXCELLENT
 Fluorescence SLIGHT
 Inscription(s) IGI 487104519
 Comments: IDEAL CUT ROUND BRILLIANT
 Faint Yellowish Green

