



**INTERNATIONAL  
GEMOLOGICAL  
INSTITUTE**

485153222



August 23, 2021  
IGI Report Number 485153222

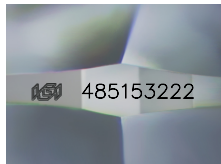
NATURAL DIAMOND  
ROUND BRILLIANT  
4.16 - 4.18 x 2.69 mm

Carat Weight 0.30 CARAT  
Color Grade H  
Clarity Grade I 1  
Cut Grade VERY GOOD  
Polish VERY GOOD  
Symmetry EXCELLENT  
Fluorescence NONE  
Inscription(s) IGI 485153222

**DIAMOND REPORT**

**ELECTRONIC COPY**

August 23, 2021  
IGI Report Number 485153222  
Description NATURAL DIAMOND  
Shape and Cutting Style ROUND BRILLIANT  
Measurements 4.16 - 4.18 x 2.69 mm

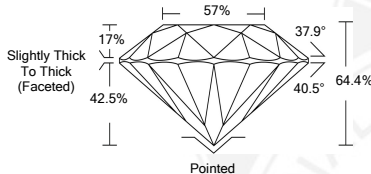


**GRADING RESULTS**

Carat Weight 0.30 CARAT  
Color Grade H  
Clarity Grade I 1  
Cut Grade VERY GOOD

**ADDITIONAL GRADING INFORMATION**

Polish VERY GOOD  
Symmetry EXCELLENT  
Fluorescence NONE  
Identification Features CLOUD, CRYSTAL, FEATHER  
Inscription(s) IGI 485153222



**COLOR**

D - F	G - J	K - M	N - R	S - Z	FANCY
Colorless	Near Colorless	Slightly Tinted	Very Light Color	Light Color	

**CLARITY**

IF	VS <sup>1-2</sup>	VS <sup>1-2</sup>	SI <sup>1-2</sup>	I <sup>1-2</sup>
Internally Flawless	Very Very Slightly Included	Very Slightly Included	Slightly Included	Included



August 23, 2021  
IGI Report Number 485153222

NATURAL DIAMOND  
ROUND BRILLIANT  
4.16 - 4.18 x 2.69 mm

Carat Weight 0.30 CARAT  
Color Grade H  
Clarity Grade I 1  
Cut Grade VERY GOOD  
Polish VERY GOOD  
Symmetry EXCELLENT  
Fluorescence NONE  
Inscription(s) IGI 485153222

