



INTERNATIONAL GEMOLOGICAL INSTITUTE

485142031



December 13, 2021
IGI Report Number 485142031

NATURAL DIAMOND
ROUND BRILLIANT
6.26 - 6.28 x 3.88 mm

Carat Weight 0.95 CARAT
Color Grade K
Clarity Grade I 1
Cut Grade EXCELLENT
Polish VERY GOOD
Symmetry VERY GOOD
Fluorescence NONE
Inscription(s) IGI 485142031

DIAMOND REPORT

ELECTRONIC COPY

December 13, 2021

IGI Report Number

485142031

Description

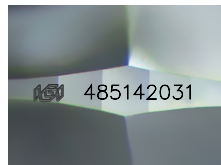
NATURAL DIAMOND

Shape and Cutting Style

ROUND BRILLIANT

Measurements

6.26 - 6.28 x 3.88 mm



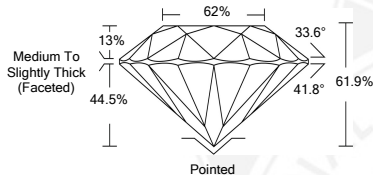
GRADING RESULTS

Carat Weight 0.95 CARAT
Color Grade K
Clarity Grade I 1
Cut Grade EXCELLENT

ADDITIONAL GRADING INFORMATION

Polish VERY GOOD
Symmetry VERY GOOD
Fluorescence NONE

Identification Features CLOUD, CRYSTAL, FEATHER
Inscription(s) IGI 485142031



COLOR

D - F	G - J	K - M	N - R	S - Z	FANCY
Colorless	Near Colorless	Slightly Tinted	Very Light Color	Light Color	

CLARITY

IF	VS ¹⁻²	VS ¹⁻²	SI ¹⁻²	I ¹⁻²
Internally Flawless	Very Very Slightly Included	Very Slightly Included	Slightly Included	Included



December 13, 2021
IGI Report Number 485142031

NATURAL DIAMOND
ROUND BRILLIANT
6.26 - 6.28 x 3.88 mm

Carat Weight 0.95 CARAT
Color Grade K
Clarity Grade I 1
Cut Grade EXCELLENT
Polish VERY GOOD
Symmetry VERY GOOD
Fluorescence NONE
Inscription(s) IGI 485142031



© IGI 2020, International Gemological Institute

FD - 10 20



THIS DOCUMENT WAS PRODUCED WITH THE FOLLOWING SECURITY MEASURES: SPECIAL DOCUMENT PAPER, INK SCREENS, WATERMARK BACKGROUND DESIGNS, HOLOGRAM AND OTHER SECURITY FEATURES NOT LISTED AND DO EXCEED DOCUMENT SECURITY INDUSTRY GUIDELINES.