



483189381

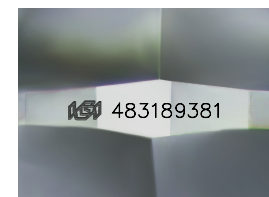
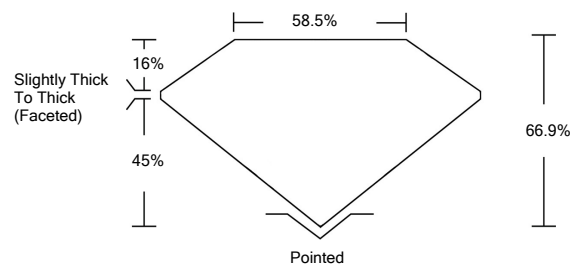
DIAMOND REPORT **ELECTRONIC COPY**

July 21, 2021
 IGI Report Number 483189381
 Description NATURAL DIAMOND
 Shape and Cutting Style PEAR BRILLIANT
 Measurements 12.42 x 7.76 x 5.19 mm

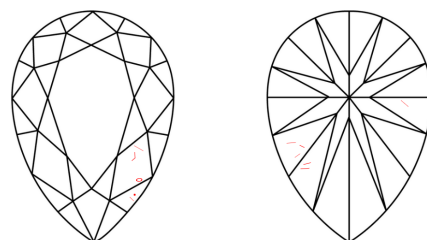
GRADING RESULTS
 Carat Weight 3.01 CARATS
 Color Grade I
 Clarity Grade VS 2

ADDITIONAL GRADING INFORMATION
 Polish - Symmetry EXCELLENT
 Proportions VERY GOOD
 Fluorescence VERY SLIGHT
 Inscription(s) IGI 483189381

PROPORTIONS



CLARITY CHARACTERISTICS



KEY TO SYMBOLS

Red symbols indicate internal characteristics.
 Green symbols indicate external characteristics.

COLOR

D - F	G - J	K - M	N - R	S - Z	FANCY
Colorless	Near Colorless	Slightly Tinted	Very Light Color	Light Color	

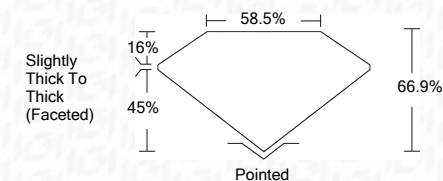
CLARITY

IF	VS ¹⁻²	VS ¹⁻²	SI ¹⁻²	I ¹⁻³
Internally Flawless	Very Very Slightly Included	Very Slightly Included	Slightly Included	Included



July 21, 2021
 IGI Report Number 483189381
 Description NATURAL DIAMOND
 Shape and Cutting Style PEAR BRILLIANT
 Measurements 12.42 x 7.76 x 5.19 mm

GRADING RESULTS
 Carat Weight 3.01 CARATS
 Color Grade I
 Clarity Grade VS 2



ADDITIONAL GRADING INFORMATION
 Polish - Symmetry EXCELLENT
 Proportions VERY GOOD
 Fluorescence VERY SLIGHT
 Inscription(s) IGI 483189381



IGI

July 21, 2021
 IGI Report No 483189381
 NATURAL DIAMOND
 PEAR BRILLIANT
 12.42 x 7.76 x 5.19 mm
 Carat Weight 3.01 CARATS
 Color Grade I
 Clarity Grade VS2
 Depth 66.9%
 Table 58.5%
 Girdle Slightly Thick To Thick (Faceted)
 Culet Pointed
 Pol - Sym EXCELLENT
 Proportions VERY GOOD
 Fluorescence VERY SLIGHT
 Inscription(s) IGI 483189381