



478103948

**DIAMOND REPORT** **ELECTRONIC COPY**



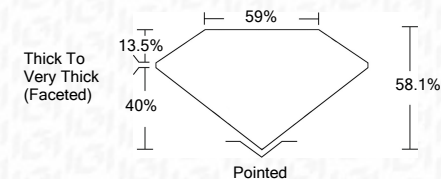
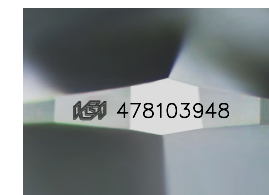
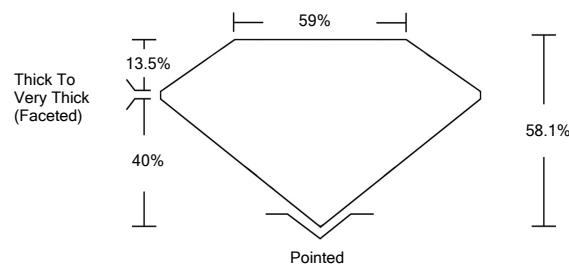
June 1, 2021  
 IGI Report Number 478103948  
 Description NATURAL DIAMOND  
 Shape and Cutting Style PEAR BRILLIANT  
 Measurements 10.23 x 6.44 x 3.74 mm  
**GRADING RESULTS**  
 Carat Weight 1.51 CARAT  
 Color Grade J  
 Clarity Grade SI 1

June 1, 2021  
 IGI Report Number 478103948  
 Description NATURAL DIAMOND  
 Shape and Cutting Style PEAR BRILLIANT  
 Measurements 10.23 x 6.44 x 3.74 mm

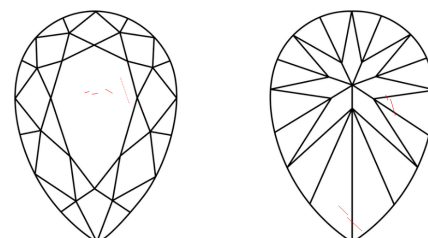
**GRADING RESULTS**  
 Carat Weight 1.51 CARAT  
 Color Grade J  
 Clarity Grade SI 1

**ADDITIONAL GRADING INFORMATION**  
 Polish - Symmetry EXCELLENT  
 Proportions VERY GOOD  
 Fluorescence NONE  
 Inscription(s) IGI 478103948

**PROPORTIONS**



**CLARITY CHARACTERISTICS**



**KEY TO SYMBOLS**

Red symbols indicate internal characteristics.  
 Green symbols indicate external characteristics.

**COLOR**

D - F	G - J	K - M	N - R	S - Z	FANCY
Colorless	Near Colorless	Slightly Tinted	Very Light Color	Light Color	

**CLARITY**

IF	VS <sup>1-2</sup>	VS <sup>1-2</sup>	SI <sup>1-2</sup>	I <sup>1-3</sup>
Internally Flawless	Very Very Slightly Included	Very Slightly Included	Slightly Included	Included

**ADDITIONAL GRADING INFORMATION**  
 Polish - Symmetry EXCELLENT  
 Proportions VERY GOOD  
 Fluorescence NONE  
 Inscription(s) IGI 478103948



June 1, 2021  
 IGI Report No 478103948  
 NATURAL DIAMOND  
 PEAR BRILLIANT  
 10.23 x 6.44 x 3.74 mm  
 Carat Weight 1.51 CARAT  
 Color Grade SI 1  
 Depth 58.1%  
 Table 13.5%  
 Girdle Thick To Very Thick (Faceted)  
 Culet Pointed  
 Pol - Sym EXCELLENT  
 Proportions VERY GOOD  
 Fluorescence NONE  
 Inscription(s) IGI 478103948