



**INTERNATIONAL
GEMOLOGICAL
INSTITUTE**

476171165



June 3, 2021

IGI Report Number 476171165

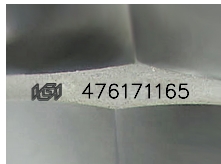
NATURAL DIAMOND
ROUND BRILLIANT
5.20 - 5.26 x 3.16 mm

Carat Weight 0.53 CARAT
Color Grade Q-R
Clarity Grade I 1
Cut Grade EXCELLENT
Polish EXCELLENT
Symmetry EXCELLENT
Fluorescence VERY SLIGHT
Inscription(s) IGI 476171165

DIAMOND REPORT

ELECTRONIC COPY

June 3, 2021
IGI Report Number 476171165
Description NATURAL DIAMOND
Shape and Cutting Style ROUND BRILLIANT
Measurements 5.20 - 5.26 x 3.16 mm



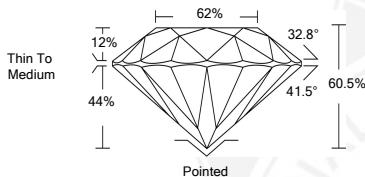
GRADING RESULTS

Carat Weight 0.53 CARAT
Color Grade Q-R
Clarity Grade I 1
Cut Grade EXCELLENT

ADDITIONAL GRADING INFORMATION

Polish EXCELLENT
Symmetry EXCELLENT
Fluorescence VERY SLIGHT

Identification Features CLOUD, CRYSTAL, FEATHER
Inscription(s) IGI 476171165



COLOR

D - F	G - J	K - M	N - R	S - Z	FANCY
Colorless	Near Colorless	Slightly Tinted	Very Light Color	Light Color	

CLARITY

IF	VS ¹⁻²	VS ¹⁻²	SI ¹⁻²	I ¹⁻²
Internally Flawless	Very Very Slightly Included	Very Slightly Included	Slightly Included	Included



June 3, 2021

IGI Report Number 476171165

NATURAL DIAMOND
ROUND BRILLIANT
5.20 - 5.26 x 3.16 mm

Carat Weight 0.53 CARAT
Color Grade Q-R
Clarity Grade I 1
Cut Grade EXCELLENT
Polish EXCELLENT
Symmetry EXCELLENT
Fluorescence VERY SLIGHT
Inscription(s) IGI 476171165



© IGI 2020, International Gemological Institute

FD - 10 20



THIS DOCUMENT WAS PRODUCED WITH THE FOLLOWING SECURITY MEASURES: SPECIAL DOCUMENT PAPER, INK SCREENS, WATERMARK BACKGROUND DESIGNS, HOLOGRAM AND OTHER SECURITY FEATURES NOT LISTED AND DO EXCEED DOCUMENT SECURITY INDUSTRY GUIDELINES.