



**INTERNATIONAL
GEMOLOGICAL
INSTITUTE**

462159294



April 14, 2021
IGI Report Number 462159294

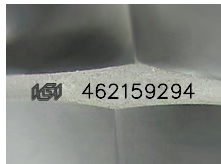
NATURAL DIAMOND
ROUND BRILLIANT
4.71 - 4.76 x 2.93 mm

Carat Weight 0.40 CARAT
Color Grade I
Clarity Grade SI 2
Cut Grade EXCELLENT
Polish EXCELLENT
Symmetry EXCELLENT
Fluorescence NONE
Inscription(s) IGI 462159294
Comments: IDEAL CUT ROUND BRILLIANT

DIAMOND REPORT

ELECTRONIC COPY

April 14, 2021
IGI Report Number 462159294
Description NATURAL DIAMOND
Shape and Cutting Style ROUND BRILLIANT
Measurements 4.71 - 4.76 x 2.93 mm



GRADING RESULTS

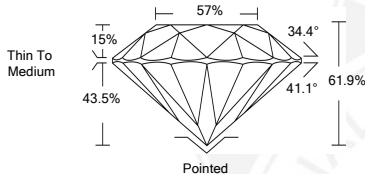
Carat Weight 0.40 CARAT
Color Grade I
Clarity Grade SI 2
Cut Grade EXCELLENT

ADDITIONAL GRADING INFORMATION

Polish EXCELLENT
Symmetry EXCELLENT
Fluorescence NONE

Identification Features CLOUD, CRYSTAL, FEATHER
Inscription(s) IGI 462159294

Comments: IDEAL CUT ROUND BRILLIANT



COLOR

| D - F | G - J | K - M | N - R | S - Z | FANCY |
|-----------|----------------|-----------------|------------------|-------------|-------|
| Colorless | Near Colorless | Slightly Tinted | Very Light Color | Light Color | |

CLARITY

| IF | VS ¹⁻² | VS ¹⁻² | SI ¹⁻² | I ¹⁻² |
|---------------------|-----------------------------|------------------------|-------------------|------------------|
| Internally Flawless | Very Very Slightly Included | Very Slightly Included | Slightly Included | Included |



April 14, 2021
IGI Report Number 462159294

NATURAL DIAMOND
ROUND BRILLIANT
4.71 - 4.76 x 2.93 mm

Carat Weight 0.40 CARAT
Color Grade I
Clarity Grade SI 2
Cut Grade EXCELLENT
Polish EXCELLENT
Symmetry EXCELLENT
Fluorescence NONE
Inscription(s) IGI 462159294
Comments: IDEAL CUT ROUND BRILLIANT

