

GIA NATURAL DIAMOND GRADING REPORT

July 26, 2024
 GIA Report Number 1507032645
 Shape and Cutting Style Round Brilliant
 Measurements 7.25 - 7.29 x 4.52 mm

GRADING RESULTS

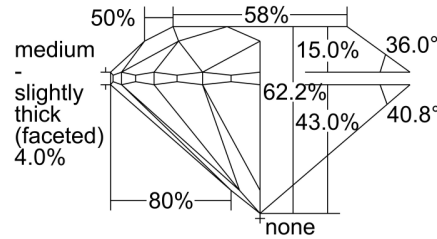
Carat Weight 1.50 carat
 Color Grade J
 Clarity Grade SI1
 Cut Grade Excellent

ADDITIONAL GRADING INFORMATION

Polish Excellent
 Symmetry Excellent
 Fluorescence None
 Inscription(s): GIA 1507032645

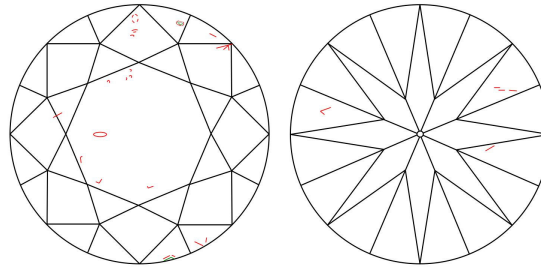
Comments: Additional clouds are not shown. Pinpoints are not shown.

PROPORTIONS



Profile to actual proportions

CLARITY CHARACTERISTICS



KEY TO SYMBOLS*

- Crystal
- ~ Feather
- ⊙ Cloud
- ∧ Indented Natural

* Red symbols denote internal characteristics (inclusions). Green or black symbols denote external characteristics (blemishes). Diagram is an approximate representation of the diamond, and symbols shown indicate type, position, and approximate size of clarity characteristics. All clarity characteristics may not be shown. Details of finish are not shown.

GRADING SCALES

GIA COLOR SCALE

COLORLESS	D
	E
	F
	G
NEAR COLORLESS	H
	I
	J
FANT	K
	L
	M
VERY LIGHT	N
	O
	P
	Q
	R
	S
	T
	U
LIGHT	V
	W
	X
	Y
	Z

GIA CLARITY SCALE

	FLAWLESS
	INTERNALLY FLAWLESS
VERY VERY SLIGHTLY INCLUDED	VVS ₁
	VVS ₂
VERY SLIGHTLY INCLUDED	VS ₁
	VS ₂
SLIGHTLY INCLUDED	SI ₁
	SI ₂
INCLUDED	I ₁
	I ₂
	I ₃

GIA CUT SCALE

	EXCELLENT
	VERY GOOD
	GOOD
	FAIR
	POOR



reportcheck.gia.edu



The results documented in this report refer only to the diamond described, and were obtained using the techniques and equipment available to GIA at the time of examination. This report is not a guarantee or valuation. For additional information and important limitations and disclaimers, please see GIA.edu/terms or call +1 800 421 7250 or +1 760 603 4500. ©2023 Gemological Institute of America, Inc.

THE SECURITY FEATURES IN THIS DOCUMENT, INCLUDING THE HOLOGRAM, SECURITY SCREEN AND MICROPRINT LINES, IN ADDITION TO THOSE NOT LISTED, EXCEED DOCUMENT SECURITY INDUSTRY GUIDELINES.