



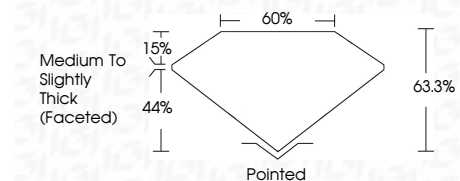
ELECTRONIC COPY

LG781648847 Report verification at igi.org



March 10, 2026 IGI Report Number LG781648847 Description LABORATORY GROWN DIAMOND Shape and Cutting Style OVAL BRILLIANT Measurements 7.85 X 5.75 X 3.64 MM

GRADING RESULTS Carat Weight 1.05 CARAT Color Grade E Clarity Grade VVS 2



ADDITIONAL GRADING INFORMATION Polish EXCELLENT Symmetry EXCELLENT Fluorescence NONE Inscription(s) IGI LG781648847 Comments: This Laboratory Grown Diamond was created by Chemical Vapor Deposition (CVD) growth process. Type IIa



March 10, 2026 IGI Report No LG781648847 OVAL BRILLIANT 1.05 CARAT E 7.85 X 5.75 X 3.64 MM Carat Weight Color Grade VVS 2 63.3% 44% 15% Medium to Slightly Thick (Faceted) Pointed EXCELLENT EXCELLENT NONE IGI LG781648847

Comments: This Laboratory Grown Diamond was created by Chemical Vapor Deposition (CVD) growth process. Type IIa

LABORATORY GROWN DIAMOND REPORT

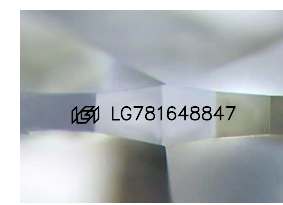
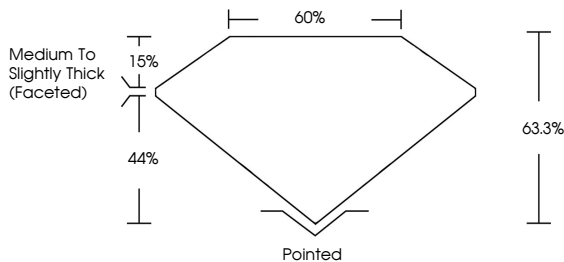
March 10, 2026 IGI Report Number LG781648847 Description LABORATORY GROWN DIAMOND Shape and Cutting Style OVAL BRILLIANT Measurements 7.85 X 5.75 X 3.64 MM

GRADING RESULTS Carat Weight 1.05 CARAT Color Grade E Clarity Grade VVS 2

ADDITIONAL GRADING INFORMATION Polish EXCELLENT Symmetry EXCELLENT Fluorescence NONE Inscription(s) IGI LG781648847

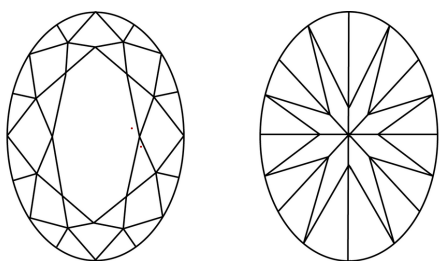
Comments: This Laboratory Grown Diamond was created by Chemical Vapor Deposition (CVD) growth process. Type IIa

PROPORTIONS



Sample Image Used

CLARITY CHARACTERISTICS



KEY TO SYMBOLS Red symbols indicate internal characteristics. Green symbols indicate external characteristics.

Table with columns for Color grades: D, E, F, G, H, I, J, Faint, Very Light, Light.

Table with columns for Clarity grades: FL, IF, VVS 1-2, VS 1-2, SI 1-2, I 1-3, Flawless, Internally Flawless, Very Very Slightly Included, Very Slightly Included, Slightly Included, Included.

