



ELECTRONIC COPY

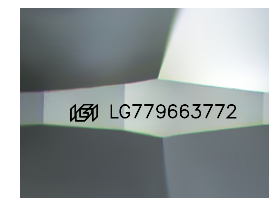
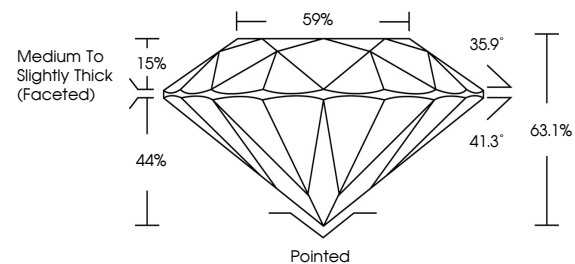
LG779663772
Report verification at igi.org



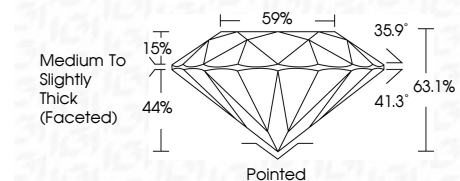
March 9, 2026
IGI Report Number **LG779663772**
Description **LABORATORY GROWN DIAMOND**
Shape and Cutting Style **ROUND BRILLIANT**
Measurements **6.43 - 6.48 X 4.08 MM**
GRADING RESULTS
Carat Weight **1.06 CARAT**
Color Grade **F**
Clarity Grade **SI 1**
Cut Grade **EXCELLENT**

March 9, 2026
IGI Report Number **LG779663772**
Description **LABORATORY GROWN DIAMOND**
Shape and Cutting Style **ROUND BRILLIANT**
Measurements **6.43 - 6.48 X 4.08 MM**

PROPORTIONS



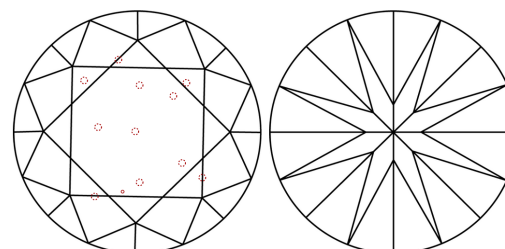
Sample Image Used



GRADING RESULTS

Carat Weight **1.06 CARAT**
Color Grade **F**
Clarity Grade **SI 1**
Cut Grade **EXCELLENT**

CLARITY CHARACTERISTICS



KEY TO SYMBOLS

Red symbols indicate internal characteristics.
Green symbols indicate external characteristics.

ADDITIONAL GRADING INFORMATION

Polish **EXCELLENT**
Symmetry **EXCELLENT**
Fluorescence **NONE**
Inscription(s) **IGI LG779663772**

COLOR

D E F G H I J Faint Very Light Light

CLARITY

FL	IF	VS ¹⁻²	VS ¹⁻²	SI ¹⁻²	I ¹⁻³
Flawless	Internally Flawless	Very Very Slightly Included	Very Slightly Included	Slightly Included	Included

ADDITIONAL GRADING INFORMATION

Polish **EXCELLENT**
Symmetry **EXCELLENT**
Fluorescence **NONE**
Inscription(s) **IGI LG779663772**
Comments: This Laboratory Grown Diamond was created by Chemical Vapor Deposition (CVD) growth process. Type IIa



IGI



March 9, 2026
IGI Report No LG779663772
ROUND BRILLIANT
6.43 - 6.48 X 4.08 MM
1.06 CARAT
Color Grade **F**
Clarity Grade **SI 1**
Depth **EXCELLENT**
Table **63.1%**
Girdle **59%**
Medium To Slightly Thick (Faceted)
Culet **Pointed**
Polish **EXCELLENT**
Symmetry **EXCELLENT**
Fluorescence **NONE**
Inscription(s) **IGI LG779663772**
Comments: This Laboratory Grown Diamond was created by Chemical Vapor Deposition (CVD) growth process. Type IIa