



ELECTRONIC COPY

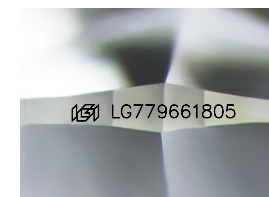
LG779661805
Report verification at igi.org



March 7, 2026
IGI Report Number **LG779661805**
Description **LABORATORY GROWN DIAMOND**
Shape and Cutting Style **ROUND BRILLIANT**
Measurements **8.03 - 8.07 X 4.99 MM**

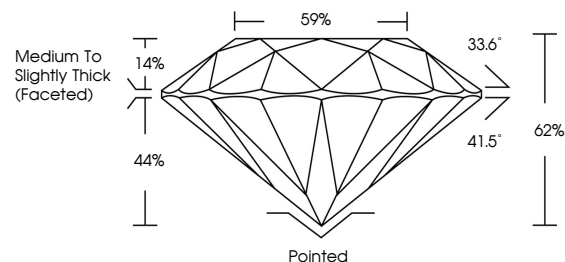
GRADING RESULTS

Carat Weight **1.99 CARAT**
Color Grade **E**
Clarity Grade **VS 1**
Cut Grade **IDEAL**

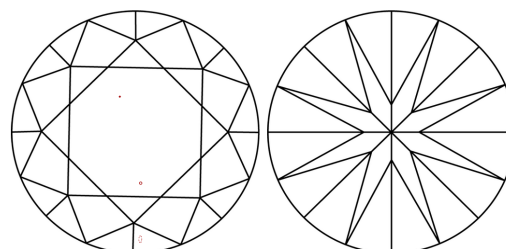


Sample Image Used

PROPORTIONS



CLARITY CHARACTERISTICS



KEY TO SYMBOLS

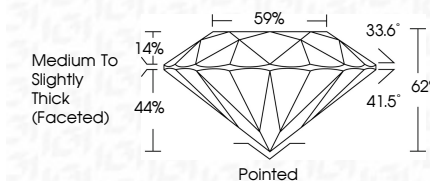
Red symbols indicate internal characteristics.
Green symbols indicate external characteristics.

COLOR

D E F G H I J Faint Very Light Light

CLARITY

FL	IF	VS ¹⁻²	VS ¹⁻²	SI ¹⁻²	I ¹⁻³
Flawless	Internally Flawless	Very Very Slightly Included	Very Slightly Included	Slightly Included	Included



ADDITIONAL GRADING INFORMATION

Polish **EXCELLENT**
Symmetry **EXCELLENT**
Fluorescence **NONE**
Inscription(s) **IGI LG779661805**
Comments: This Laboratory Grown Diamond was created by Chemical Vapor Deposition (CVD) growth process. Type IIa



IGI



March 7, 2026
IGI Report No LG779661805
ROUND BRILLIANT
8.03 - 8.07 X 4.99 MM
1.99 CARAT
Color Grade **E**
Clarity Grade **VS 1**
Depth **IDEAL**
Table **62%**
Girdle **69%**
Medium To Slightly Thick (Faceted)
Culet **Pointed**
Polish **EXCELLENT**
Symmetry **EXCELLENT**
Fluorescence **NONE**
Inscription(s) **IGI LG779661805**
Comments: This Laboratory Grown Diamond was created by Chemical Vapor Deposition (CVD) growth process. Type IIa