



ELECTRONIC COPY

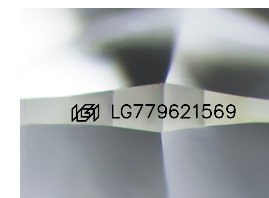
LG779621569
Report verification at igi.org



March 7, 2026
IGI Report Number **LG779621569**
Description **LABORATORY GROWN DIAMOND**
Shape and Cutting Style **ROUND BRILLIANT**
Measurements **7.93 - 7.98 X 4.82 MM**

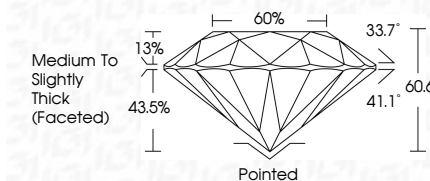
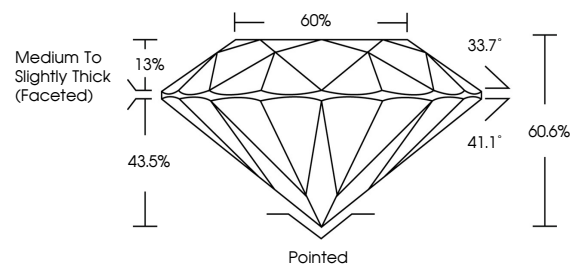
GRADING RESULTS

Carat Weight **1.88 CARAT**
Color Grade **E**
Clarity Grade **VS 1**
Cut Grade **IDEAL**

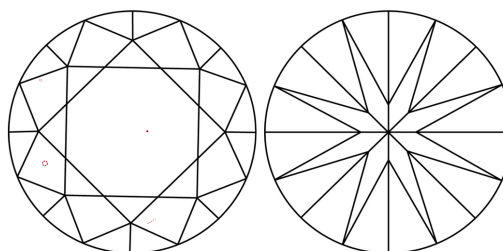


Sample Image Used

PROPORTIONS



CLARITY CHARACTERISTICS



KEY TO SYMBOLS

Red symbols indicate internal characteristics.
Green symbols indicate external characteristics.

COLOR

D E F G H I J Faint Very Light Light

CLARITY

FL	IF	VS ¹⁻²	VS ¹⁻²	SI ¹⁻²	I ¹⁻³
Flawless	Internally Flawless	Very Very Slightly Included	Very Slightly Included	Slightly Included	Included

ADDITIONAL GRADING INFORMATION

Polish **EXCELLENT**
Symmetry **EXCELLENT**
Fluorescence **NONE**
Inscription(s) **IGI LG779621569**
Comments: This Laboratory Grown Diamond was created by Chemical Vapor Deposition (CVD) growth process. Type IIa



March 7, 2026
IGI Report No LG779621569
ROUND BRILLIANT
7.93 - 7.98 X 4.82 MM
1.88 CARAT
E
VS 1
IDEAL
60.6%
Medium To Slightly Thick (Faceted)
Pointed
EXCELLENT
EXCELLENT
NONE
IGI LG779621569
Comments: This Laboratory Grown Diamond was created by Chemical Vapor Deposition (CVD) growth process. Type IIa