



**ELECTRONIC COPY**

LG778676958  
Report verification at igi.org



March 5, 2026

IGI Report Number **LG778676958**

Description **LABORATORY GROWN DIAMOND**

Shape and Cutting Style **ROUND BRILLIANT**

Measurements **7.97 - 8.01 X 5.06 MM**

**GRADING RESULTS**

Carat Weight **2.02 CARATS**

Color Grade **E**

Clarity Grade **VS 1**

Cut Grade **EXCELLENT**

March 5, 2026  
IGI Report Number **LG778676958**  
Description **LABORATORY GROWN DIAMOND**  
Shape and Cutting Style **ROUND BRILLIANT**  
Measurements **7.97 - 8.01 X 5.06 MM**

**GRADING RESULTS**

Carat Weight **2.02 CARATS**

Color Grade **E**

Clarity Grade **VS 1**

Cut Grade **EXCELLENT**

**ADDITIONAL GRADING INFORMATION**

Polish **EXCELLENT**

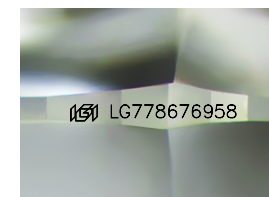
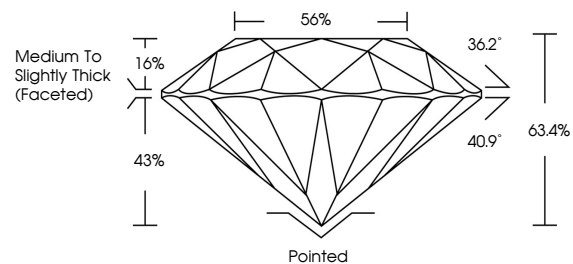
Symmetry **EXCELLENT**

Fluorescence **NONE**

Inscription(s) **IGI LG778676958**

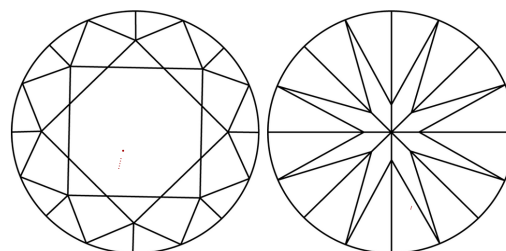
Comments: This Laboratory Grown Diamond was created by Chemical Vapor Deposition (CVD) growth process. Type IIa

**PROPORTIONS**



Sample Image Used

**CLARITY CHARACTERISTICS**



**KEY TO SYMBOLS**

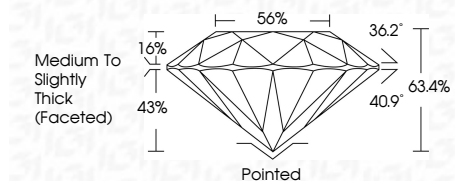
Red symbols indicate internal characteristics.  
Green symbols indicate external characteristics.

**COLOR**

D E F G H I J Faint Very Light Light

**CLARITY**

FL	IF	VS <sup>1-2</sup>	VS <sup>1-2</sup>	SI <sup>1-2</sup>	I <sup>1-3</sup>
Flawless	Internally Flawless	Very Very Slightly Included	Very Slightly Included	Slightly Included	Included



**ADDITIONAL GRADING INFORMATION**

Polish **EXCELLENT**

Symmetry **EXCELLENT**

Fluorescence **NONE**

Inscription(s) **IGI LG778676958**

Comments: This Laboratory Grown Diamond was created by Chemical Vapor Deposition (CVD) growth process. Type IIa



March 5, 2026  
IGI Report No LG778676958  
**ROUND BRILLIANT**  
2.02 CARATS  
E  
2.02 CARATS  
E  
VS 1  
EXCELLENT  
63.4%  
56%  
Medium To Slightly Thick (Faceted)  
Pointed  
EXCELLENT  
EXCELLENT  
NONE  
IGI LG778676958  
Comments: This Laboratory Grown Diamond was created by Chemical Vapor Deposition (CVD) growth process. Type IIa