



**ELECTRONIC COPY**

LG778648548  
Report verification at igi.org



March 3, 2026

IGI Report Number **LG778648548**

Description **LABORATORY GROWN DIAMOND**

Shape and Cutting Style **ROUND BRILLIANT**

Measurements **8.20 - 8.22 X 4.83 MM**

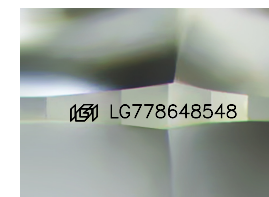
**GRADING RESULTS**

Carat Weight **2.00 CARATS**

Color Grade **F**

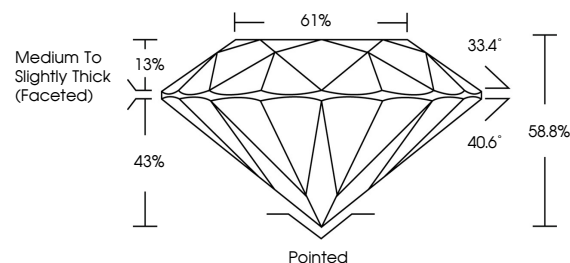
Clarity Grade **VS 1**

Cut Grade **EXCELLENT**

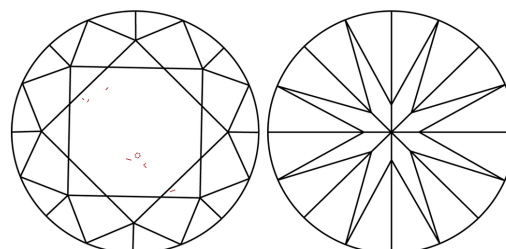


Sample Image Used

**PROPORTIONS**



**CLARITY CHARACTERISTICS**



**KEY TO SYMBOLS**

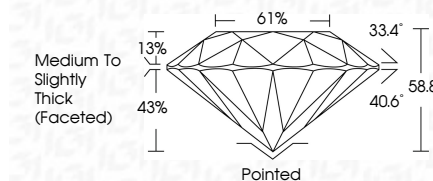
Red symbols indicate internal characteristics.  
Green symbols indicate external characteristics.

**COLOR**

D E F G H I J Faint Very Light Light

**CLARITY**

FL	IF	VS <sup>1-2</sup>	VS <sup>1-2</sup>	SI <sup>1-2</sup>	I <sup>1-3</sup>
Flawless	Internally Flawless	Very Very Slightly Included	Very Slightly Included	Slightly Included	Included



**ADDITIONAL GRADING INFORMATION**

Polish **EXCELLENT**

Symmetry **EXCELLENT**

Fluorescence **NONE**

Inscription(s) **(IGI) LG778648548**

Comments: This Laboratory Grown Diamond was created by Chemical Vapor Deposition (CVD) growth process. Type IIa



March 3, 2026  
IGI Report No LG778648548  
**ROUND BRILLIANT**  
8.20 - 8.22 X 4.83 MM  
2.00 CARATS  
F  
Color Grade  
VS 1  
Clarity Grade  
EXCELLENT  
88.0%  
Depth  
61%  
Table  
Medium To Slightly Thick (Faceted)  
Cut Grade  
Pointed  
EXCELLENT  
Symmetry  
EXCELLENT  
Fluorescence  
NONE  
Inscription(s)  
(IGI) LG778648548  
Comments: This Laboratory Grown Diamond was created by Chemical Vapor Deposition (CVD) growth process. Type IIa