



ELECTRONIC COPY

LG777628436
Report verification at igi.org



March 3, 2026

IGI Report Number **LG777628436**

Description **LABORATORY GROWN DIAMOND**

Shape and Cutting Style **PEAR BRILLIANT**

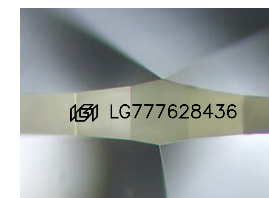
Measurements **10.91 X 6.94 X 4.24 MM**

GRADING RESULTS

Carat Weight **1.89 CARAT**

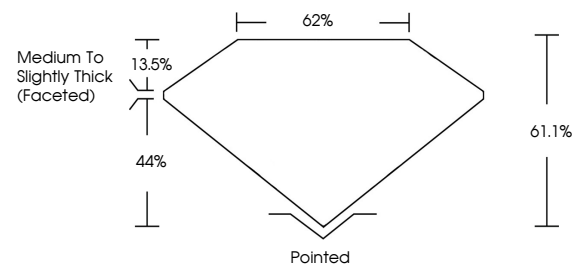
Color Grade **E**

Clarity Grade **VS 1**

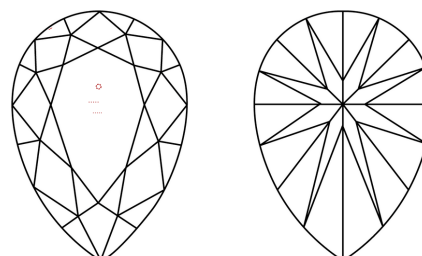


Sample Image Used

PROPORTIONS



CLARITY CHARACTERISTICS



KEY TO SYMBOLS

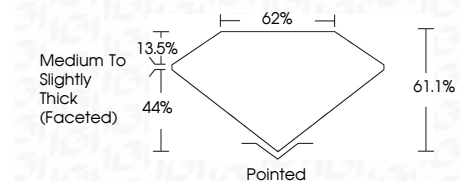
Red symbols indicate internal characteristics.
Green symbols indicate external characteristics.

COLOR

D E F G H I J Faint Very Light Light

CLARITY

FL	IF	VS ¹⁻²	VS ¹⁻²	SI ¹⁻²	I ¹⁻³
Flawless	Internally Flawless	Very Very Slightly Included	Very Slightly Included	Slightly Included	Included



ADDITIONAL GRADING INFORMATION

Polish **EXCELLENT**

Symmetry **EXCELLENT**

Fluorescence **NONE**

Inscription(s) **IGI LG777628436**

Comments: This Laboratory Grown Diamond was created by Chemical Vapor Deposition (CVD) growth process. Type IIa



IGI



March 3, 2026
IGI Report No LG777628436
PEAR BRILLIANT

1.89 CARAT
E

10.91 X 6.94 X 4.24 MM

Carat Weight
Color Grade
Clarity Grade
Table
Depth
Girdle
Medium to Slightly Thick (Faceted)

VS 1
61.1%
62%

Pointed
EXCELLENT
EXCELLENT
NONE
NONE

Culet
Polish
Symmetry
Fluorescence
Inscription(s)

IGI LG777628436

Comments: This Laboratory Grown Diamond was created by Chemical Vapor Deposition (CVD) growth process. Type IIa