



**ELECTRONIC COPY**

LG776626936  
Report verification at igi.org



February 21, 2026

IGI Report Number **LG776626936**

Description **LABORATORY GROWN DIAMOND**

Shape and Cutting Style **PEAR BRILLIANT**

Measurements **11.01 X 7.00 X 4.32 MM**

**GRADING RESULTS**

Carat Weight **1.97 CARAT**

Color Grade **F**

Clarity Grade **VS 1**

February 21, 2026  
IGI Report Number **LG776626936**  
Description **LABORATORY GROWN DIAMOND**  
Shape and Cutting Style **PEAR BRILLIANT**  
Measurements **11.01 X 7.00 X 4.32 MM**

**GRADING RESULTS**

Carat Weight **1.97 CARAT**

Color Grade **F**

Clarity Grade **VS 1**

**ADDITIONAL GRADING INFORMATION**

Polish **EXCELLENT**

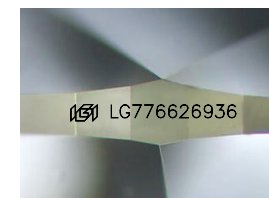
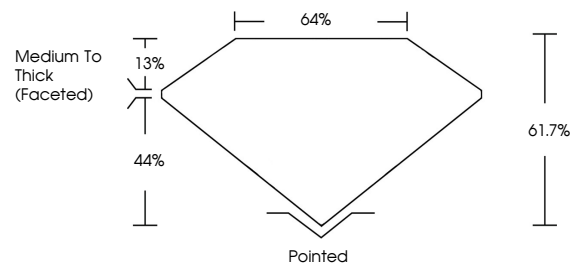
Symmetry **EXCELLENT**

Fluorescence **NONE**

Inscription(s) **IGI LG776626936**

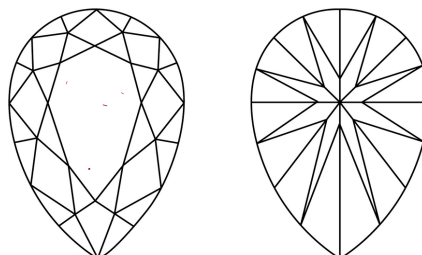
Comments: This Laboratory Grown Diamond was created by Chemical Vapor Deposition (CVD) growth process. Type IIa

**PROPORTIONS**



Sample Image Used

**CLARITY CHARACTERISTICS**



**KEY TO SYMBOLS**

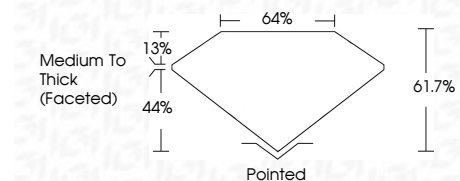
Red symbols indicate internal characteristics.  
Green symbols indicate external characteristics.

**COLOR**

D E F G H I J Faint Very Light Light

**CLARITY**

FL	IF	VS <sup>1-2</sup>	VS <sup>1-2</sup>	SI <sup>1-2</sup>	I <sup>1-3</sup>
Flawless	Internally Flawless	Very Very Slightly Included	Very Slightly Included	Slightly Included	Included



**ADDITIONAL GRADING INFORMATION**

Polish **EXCELLENT**

Symmetry **EXCELLENT**

Fluorescence **NONE**

Inscription(s) **IGI LG776626936**

Comments: This Laboratory Grown Diamond was created by Chemical Vapor Deposition (CVD) growth process. Type IIa



**IGI**



February 21, 2026  
IGI Report No LG776626936  
PEAR BRILLIANT

1.97 CARAT  
F

11.01 X 7.00 X 4.32 MM  
VS 1

61.7%  
44%  
13%

Medium To Thick (Faceted)

Pointed  
EXCELLENT  
EXCELLENT  
NONE  
IGI LG776626936

Comments: This Laboratory Grown Diamond was created by Chemical Vapor Deposition (CVD) growth process. Type IIa