



**ELECTRONIC COPY**

LG775611020  
Report verification at igi.org



February 19, 2026  
IGI Report Number **LG775611020**  
Description **LABORATORY GROWN DIAMOND**  
Shape and Cutting Style **CUT CORNERED  
RECTANGULAR MODIFIED  
BRILLIANT**  
Measurements **11.29 X 7.82 X 5.27 MM**  
**GRADING RESULTS**  
Carat Weight **3.93 CARATS**  
Color Grade **E**  
Clarity Grade **VVS 2**

February 19, 2026  
IGI Report Number **LG775611020**  
Description **LABORATORY GROWN DIAMOND**  
Shape and Cutting Style **CUT CORNERED RECTANGULAR  
MODIFIED BRILLIANT**  
Measurements **11.29 X 7.82 X 5.27 MM**

**GRADING RESULTS**

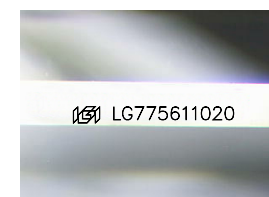
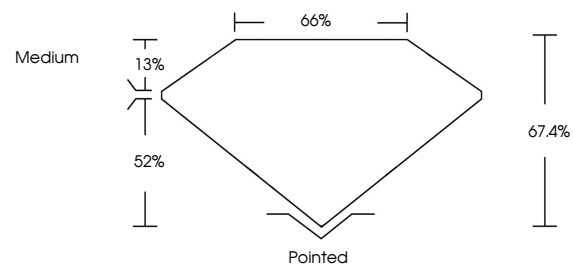
Carat Weight **3.93 CARATS**  
Color Grade **E**  
Clarity Grade **VVS 2**

**ADDITIONAL GRADING INFORMATION**

Polish **EXCELLENT**  
Symmetry **EXCELLENT**  
Fluorescence **NONE**  
Inscription(s) **IGI LG775611020**

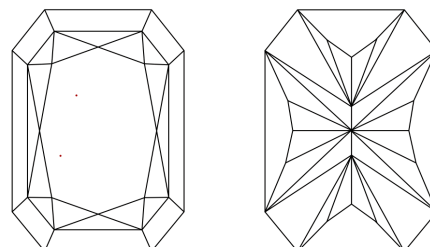
Comments: This Laboratory Grown Diamond was created by Chemical Vapor Deposition (CVD) growth process.  
Type IIa

**PROPORTIONS**



Sample Image Used

**CLARITY CHARACTERISTICS**



**KEY TO SYMBOLS**

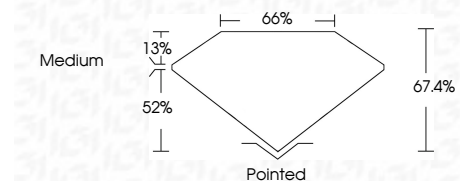
Red symbols indicate internal characteristics.  
Green symbols indicate external characteristics.

**COLOR**

D E F G H I J Faint Very Light Light

**CLARITY**

FL	IF	VVS <sup>1-2</sup>	VS <sup>1-2</sup>	SI <sup>1-2</sup>	I <sup>1-3</sup>
Flawless	Internally Flawless	Very Very Slightly Included	Very Slightly Included	Slightly Included	Included



**ADDITIONAL GRADING INFORMATION**

Polish **EXCELLENT**  
Symmetry **EXCELLENT**  
Fluorescence **NONE**  
Inscription(s) **IGI LG775611020**  
Comments: This Laboratory Grown Diamond was created by Chemical Vapor Deposition (CVD) growth process.  
Type IIa



February 19, 2026  
IGI Report No LG775611020  
CUT CORNERED RECT. MODIFIED BRILLIANT  
11.29 X 7.82 X 5.27 MM  
3.93 CARATS  
E  
VVS 2  
67.4%  
66%  
Medium  
Pointed  
EXCELLENT  
EXCELLENT  
NONE  
IGI LG775611020  
Comments: This Laboratory Grown Diamond was created by Chemical Vapor Deposition (CVD) growth process.  
Type IIa