



ELECTRONIC COPY

LG773658216
Report verification at igi.org



February 14, 2026

IGI Report Number **LG773658216**

Description **LABORATORY GROWN DIAMOND**

Shape and Cutting Style **CUT CORNERED
RECTANGULAR MODIFIED
BRILLIANT**

Measurements **10.34 X 7.13 X 4.76 MM**

GRADING RESULTS

Carat Weight **3.09 CARATS**

Color Grade **G**

Clarity Grade **VS 1**

February 14, 2026

IGI Report Number **LG773658216**

Description **LABORATORY GROWN DIAMOND**

Shape and Cutting Style **CUT CORNERED RECTANGULAR
MODIFIED BRILLIANT**

Measurements **10.34 X 7.13 X 4.76 MM**

GRADING RESULTS

Carat Weight **3.09 CARATS**

Color Grade **G**

Clarity Grade **VS 1**

ADDITIONAL GRADING INFORMATION

Polish **EXCELLENT**

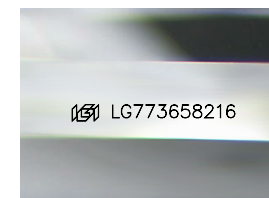
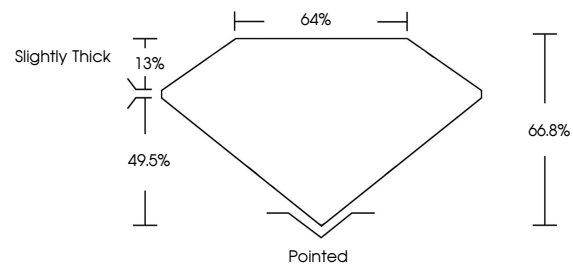
Symmetry **EXCELLENT**

Fluorescence **NONE**

Inscription(s) **IGI LG773658216**

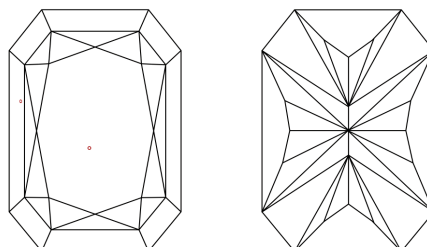
Comments: This Laboratory Grown Diamond was created by Chemical Vapor Deposition (CVD) growth process.
Type IIa

PROPORTIONS



Sample Image Used

CLARITY CHARACTERISTICS



KEY TO SYMBOLS

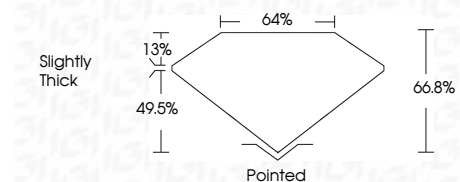
Red symbols indicate internal characteristics.
Green symbols indicate external characteristics.

COLOR

D E F G H I J Faint Very Light Light

CLARITY

FL	IF	VS ¹⁻²	VS ¹⁻²	SI ¹⁻²	I ¹⁻³
Flawless	Internally Flawless	Very Very Slightly Included	Very Slightly Included	Slightly Included	Included



ADDITIONAL GRADING INFORMATION

Polish **EXCELLENT**

Symmetry **EXCELLENT**

Fluorescence **NONE**

Inscription(s) **IGI LG773658216**

Comments: This Laboratory Grown Diamond was created by Chemical Vapor Deposition (CVD) growth process.
Type IIa



IGI



February 14, 2026
IGI Report No LG773658216
CUT CORNERED RECT. MODIFIED BRILLIANT
10.34 X 7.13 X 4.76 MM
Carat Weight 3.09 CARATS
Color Grade G
Clarity Grade VS 1
Table 64.8%
Depth 49.5%
Girdle Slightly Thick
Culet Pointed
Polish EXCELLENT
Symmetry EXCELLENT
Fluorescence NONE
Inscription(s) IGI LG773658216
Comments: This Laboratory Grown Diamond was created by Chemical Vapor Deposition (CVD) growth process.
Type IIa