



ELECTRONIC COPY

LG772696374
Report verification at igi.org



February 10, 2026

IGI Report Number **LG772696374**

Description **LABORATORY GROWN DIAMOND**

Shape and Cutting Style **OVAL BRILLIANT**

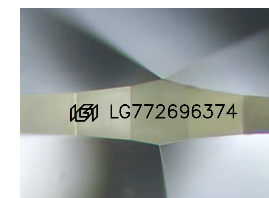
Measurements **9.43 X 6.56 X 3.91 MM**

GRADING RESULTS

Carat Weight **1.52 CARAT**

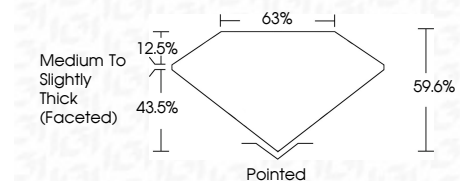
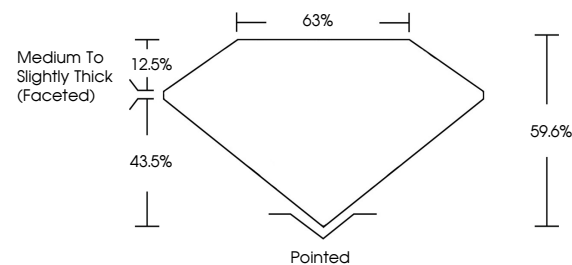
Color Grade **F**

Clarity Grade **VVS 2**

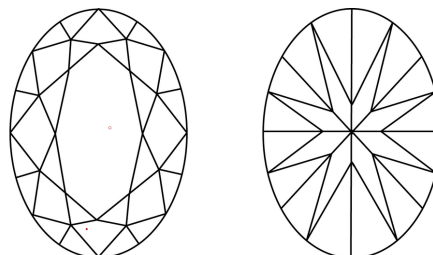


Sample Image Used

PROPORTIONS



CLARITY CHARACTERISTICS



KEY TO SYMBOLS

Red symbols indicate internal characteristics.
Green symbols indicate external characteristics.

COLOR

D E F G H I J Faint Very Light Light

CLARITY

FL	IF	VVS ¹⁻²	VS ¹⁻²	SI ¹⁻²	I ¹⁻³
Flawless	Internally Flawless	Very Very Slightly Included	Very Slightly Included	Slightly Included	Included

ADDITIONAL GRADING INFORMATION

Polish **EXCELLENT**

Symmetry **EXCELLENT**

Fluorescence **NONE**

Inscription(s) **IGI LG772696374**

Comments: This Laboratory Grown Diamond was created by Chemical Vapor Deposition (CVD) growth process. Type IIa



IGI



February 10, 2026	1.52 CARAT	F	VVS 2	63%	65%	Pointed	EXCELLENT	EXCELLENT	NONE	IGI LG772696374
IGI Report No LG772696374	9.43 X 6.56 X 3.91 MM	Color Grade	Clarity Grade	Table	Girdle	Culet	Polish	Symmetry	Fluorescence	Inscription(s)
OVAL BRILLIANT										

Comments: This Laboratory Grown Diamond was created by Chemical Vapor Deposition (CVD) growth process. Type IIa