



ELECTRONIC COPY

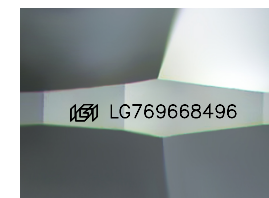
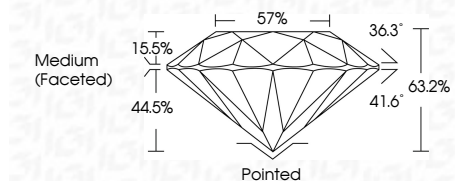
LG769668496
Report verification at igi.org



January 28, 2026
IGI Report Number LG769668496
Description LABORATORY GROWN DIAMOND
Shape and Cutting Style ROUND BRILLIANT
Measurements 8.11 - 8.15 X 5.14 MM

GRADING RESULTS

Carat Weight 2.08 CARATS
Color Grade F
Clarity Grade VS 1
Cut Grade EXCELLENT



Sample Image Used

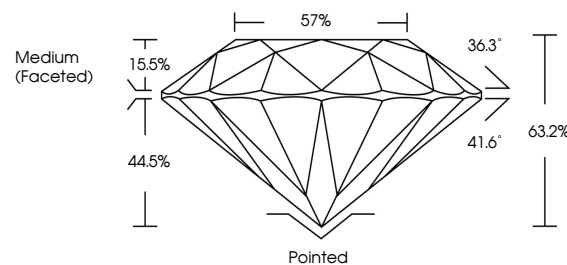
ADDITIONAL GRADING INFORMATION

Polish EXCELLENT
Symmetry EXCELLENT
Fluorescence NONE
Inscription(s) LG769668496
Comments: This Laboratory Grown Diamond was created by Chemical Vapor Deposition (CVD) growth process. Type IIa

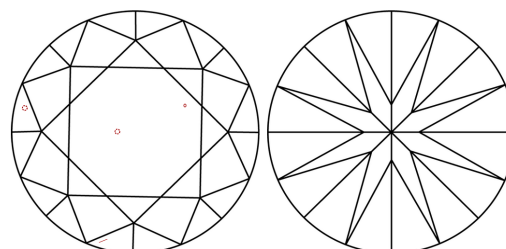


January 28, 2026
IGI Report No LG769668496
ROUND BRILLIANT
2.08 CARATS F
8.11 - 8.15 X 5.14 MM
Carat Weight
Color Grade
Clarity Grade VS 1
Cut Grade EXCELLENT
Depth 63.2%
Table 57%
Girdle Medium (Faceted)
Culet Pointed
Polish EXCELLENT
Symmetry EXCELLENT
Fluorescence NONE
Inscription(s) IGI LG769668496
Comments: This Laboratory Grown Diamond was created by Chemical Vapor Deposition (CVD) growth process. Type IIa

PROPORTIONS



CLARITY CHARACTERISTICS



KEY TO SYMBOLS

Red symbols indicate internal characteristics.
Green symbols indicate external characteristics.

COLOR

D E F G H I J Faint Very Light Light

CLARITY

FL IF VS 1-2 VS 1-2 SI 1-2 I 1-3
Flawless Internally Flawless Very Very Slightly Included Very Slightly Included Slightly Included Included

