

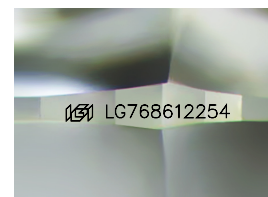
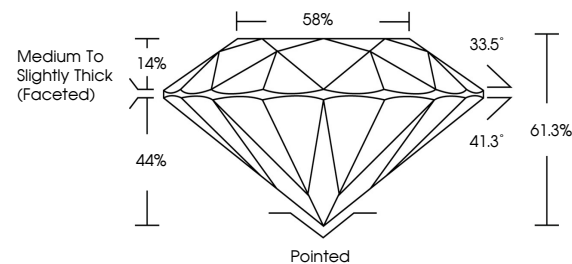


**ELECTRONIC COPY**

## LABORATORY GROWN DIAMOND REPORT

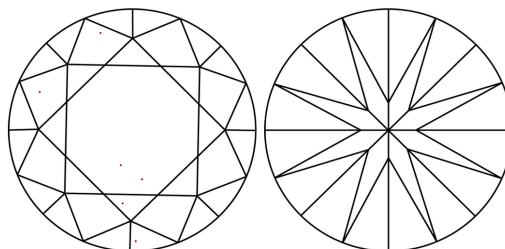
LG768612254  
Report verification at [igi.org](https://igi.org)

## PROPORTIONS



Sample Image Used

## CLARITY CHARACTERISTICS



## KEY TO SYMBOLS

Red symbols indicate internal characteristics.  
Green symbols indicate external characteristics.

## COLOR

D E F G H I J Faint Very Light Light

## CLARITY

FL	IF	VVS <sup>1-2</sup>	VS <sup>1-2</sup>	SI <sup>1-2</sup>	I <sup>1-3</sup>
Flawless	Internally Flawless	Very Very Slightly Included	Very Slightly Included	Slightly Included	Included

## LABORATORY GROWN DIAMOND REPORT



January 24, 2026

IGI Report Number **LG768612254**Description **LABORATORY GROWN DIAMOND**Shape and Cutting Style **ROUND BRILLIANT**

Measurements 8.02 - 8.07 X 4.93 MM

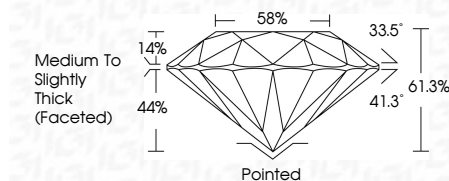
## GRADING RESULTS

Carat Weight **1.94 CARAT**

Color Grade E

Clarity Grade **VVS 2**

Cut Grade **IDEAL**



### ADDITIONAL GRADING INFORMATION

Polish EXCELLENT

Symmetry **EXCELLENT**Fluorescence NONEInscription(s)  LG768612254

Comments: This Laboratory Grown Diamond was created by Chemical Vapor Deposition (CVD) growth process.  
Type IIa



© IGI 2020, International Gemological Institute

FD - 10 20



THIS DOCUMENT WAS PRODUCED WITH THE FOLLOWING SECURITY MEASURES: SPECIAL DOCUMENT PAPER, INK SCREENS, WATERMARK, BACKGROUND DESIGNS, HOLOGRAM AND OTHER SECURITY FEATURES NOT LISTED AND DO EXCEED DOCUMENT SECURITY INDUSTRY GUIDELINES

**www.igi.org**

January 24, 2026	Report No LG766612264	ROUND BRILLIANT	1.02 - 8.07 X 4.93 MM	Color Grade	Carat Weight	1.94 CARAT
				Clarity Grade		
				Cut Grade		VVS 2
				Depth		IDEAL
				Gable		61.3%
				Table		85%
				Grain		Medium to Slightly Thick (Faceted)
				Culet		Pointed
				Polish		EXCELLENT
				Symmetry		EXCELLENT
				Fluorescence		NONE
				Fluorescence(s)		lgf LG766612264

Comments:  
This Laboratory Grown Diamond was created by Chemical Vapor Deposition (CVD) growth process.  
Type IId