

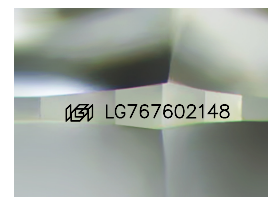
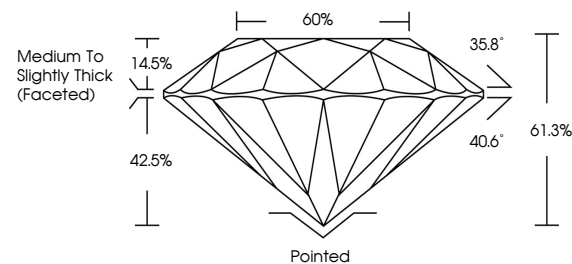


ELECTRONIC COPY

LABORATORY GROWN DIAMOND REPORT

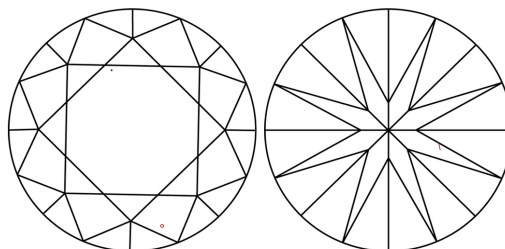
LG767602148
Report verification at igi.org

PROPORTIONS



Sample Image Used

CLARITY CHARACTERISTICS



KEY TO SYMBOLS

Red symbols indicate internal characteristics.
Green symbols indicate external characteristics.

COLOR

D E F G H I J Faint Very Light Light

CLARITY

FL	IF	VVS ¹⁻²	VS ¹⁻²	SI ¹⁻²	I ¹⁻³
Flawless	Internally Flawless	Very Very Slightly Included	Very Slightly Included	Slightly Included	Included

LABORATORY GROWN DIAMOND REPORT



January 20, 2026

IGI Report Number **LG767602148**

Description	LABORATORY GROWN DIAMOND
-------------	--------------------------

Shape and Cutting Style **ROUND BRILLIANT**

Measurements	7.99 - 8.03 X 4.91 MM
--------------	-----------------------

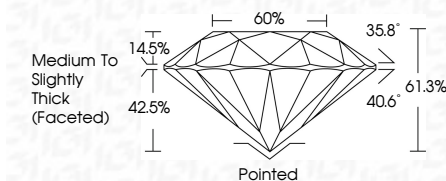
GRADING RESULTS

Carat Weight **1.98 CARAT**

Color Grade	E
-------------	---

Clarity Grade VS 1

Cut Grade **IDEAL**



ADDITIONAL GRADING INFORMATION

Polish **EXCELLENT**

Symmetry **EXCELLENT**

Fluorescence **NONE**Inscription(s) LG767602148

Comments: This Laboratory Grown Diamond was created by Chemical Vapor Deposition (CVD) growth process.
Type IIa



© IGI 2020, International Gemological Institute

FD - 10 20

www.igi.org



THIS DOCUMENT WAS PRODUCED WITH THE FOLLOWING SECURITY MEASURES: SPECIAL DOCUMENT PAPER, INK SCREENS, WATERMARK, BACKGROUND DESIGNS, HOLOGRAM AND OTHER SECURITY FEATURES NOT LISTED AND DO EXCEED DOCUMENT SECURITY INDUSTRY GUIDELINE

January 20, 2026
ICI Report No LG767602148
ROUND BRILLIANT

1.98 CARAT	VS 1	IDEAL	61.3%	Medium to Slightly Thick (Faceted)	Pointed	EXCELLENT	EXCELLENT	NONE
Color Grade	Color Grade	Cut Grade	Depth	Girdle	Culet	Polish	Symmetry	Fluorescence
Carat Weight								

Comments:
This Laboratory Grown Diamond was created by Chemical Vapor Deposition (CVD) growth process.