



**ELECTRONIC COPY**

LG766630175  
Report verification at igi.org



January 17, 2026

IGI Report Number **LG766630175**

Description **LABORATORY GROWN DIAMOND**

Shape and Cutting Style **CUT CORNERED  
RECTANGULAR MODIFIED  
BRILLIANT**

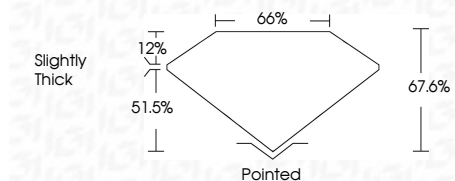
Measurements **11.30 X 7.78 X 5.26 MM**

**GRADING RESULTS**

Carat Weight **4.02 CARATS**

Color Grade **E**

Clarity Grade **VVS 2**



**ADDITIONAL GRADING INFORMATION**

Polish **EXCELLENT**

Symmetry **EXCELLENT**

Fluorescence **NONE**

Inscription(s) **IGI LG766630175**

Comments: This Laboratory Grown Diamond was created by Chemical Vapor Deposition (CVD) growth process. Type IIa



|                  |                           |                                       |                        |             |       |        |       |        |                |              |                |   |      |                 |
|------------------|---------------------------|---------------------------------------|------------------------|-------------|-------|--------|-------|--------|----------------|--------------|----------------|---|------|-----------------|
| January 17, 2026 | IGI Report No LG766630175 | CUT CORNERED RECT. MODIFIED BRILLIANT | 11.30 X 7.78 X 5.26 MM | 4.02 CARATS | E     | VVS 2  | 67.6% | 65%    | Slightly Thick | Pointed      | EXCELLENT      | EXCELLENT   | NONE | IGI LG766630175 |
| IGI              | Carat Weight              | Color Grade                           | Clarity Grade          | Table       | Depth | Graile | Culet | Polish | Symmetry       | Fluorescence | Inscription(s) | Comments: This Laboratory Grown Diamond was created by Chemical Vapor Deposition (CVD) growth process. Type IIa |      |                 |

**LABORATORY GROWN DIAMOND REPORT**

January 17, 2026

IGI Report Number **LG766630175**

Description **LABORATORY GROWN DIAMOND**

Shape and Cutting Style **CUT CORNERED RECTANGULAR  
MODIFIED BRILLIANT**

Measurements **11.30 X 7.78 X 5.26 MM**

**GRADING RESULTS**

Carat Weight **4.02 CARATS**

Color Grade **E**

Clarity Grade **VVS 2**

**ADDITIONAL GRADING INFORMATION**

Polish **EXCELLENT**

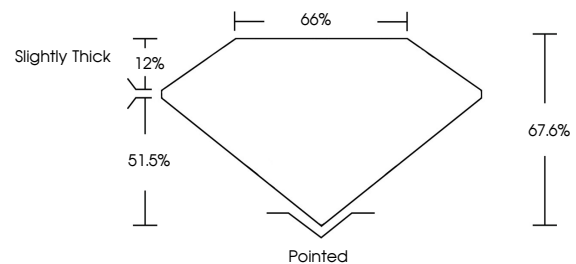
Symmetry **EXCELLENT**

Fluorescence **NONE**

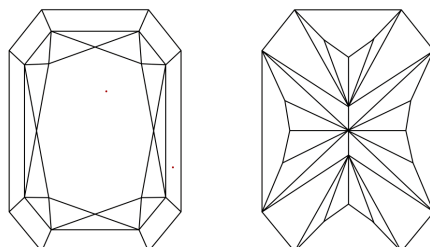
Inscription(s) **IGI LG766630175**

Comments: This Laboratory Grown Diamond was created by Chemical Vapor Deposition (CVD) growth process. Type IIa

**PROPORTIONS**

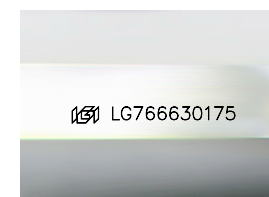


**CLARITY CHARACTERISTICS**



**KEY TO SYMBOLS**

Red symbols indicate internal characteristics.  
Green symbols indicate external characteristics.



Sample Image Used

**COLOR**

D E F G H I J Faint Very Light Light

**CLARITY**

|          |                     |                             |                        |                   |                  |
|----------|---------------------|-----------------------------|------------------------|-------------------|------------------|
| FL       | IF                  | VVS <sup>1-2</sup>          | VS <sup>1-2</sup>      | SI <sup>1-2</sup> | I <sup>1-3</sup> |
| Flawless | Internally Flawless | Very Very Slightly Included | Very Slightly Included | Slightly Included | Included         |

