

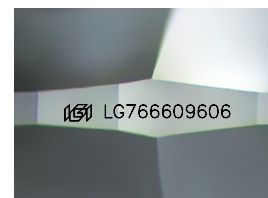
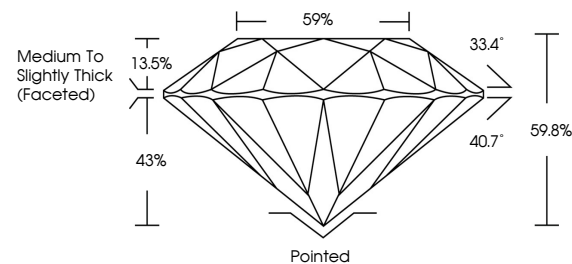


**ELECTRONIC COPY**

## LABORATORY GROWN DIAMOND REPORT

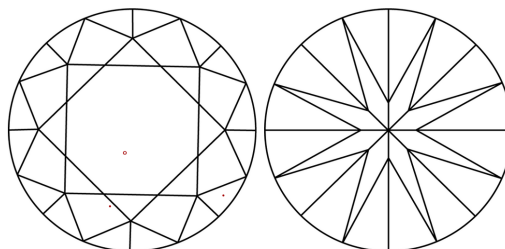
LG766609606  
Report verification at [igi.org](https://igi.org)

## PROPORTIONS



Sample Image Used

## CLARITY CHARACTERISTICS



### KEY TO SYMBOLS

Red symbols indicate internal characteristics.  
Green symbols indicate external characteristics.

## COLOR

D E F G H I J Faint Very Light Light

## CLARITY

FL	IF	VVS <sup>1-2</sup>	VS <sup>1-2</sup>	SI <sup>1-2</sup>	I <sup>1-3</sup>
Flawless	Internally Flawless	Very Very Slightly Included	Very Slightly Included	Slightly Included	Included

## LABORATORY GROWN DIAMOND REPORT



January 17, 2026

IGI Report Number **LG766609606**Description **LABORATORY GROWN DIAMOND**Shape and Cutting Style **ROUND BRILLIANT**

Measurements **8.09 - 8.13 X 4.84 MM**

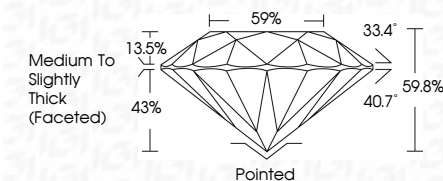
## GRADING RESULTS

Carat Weight **1.94 CARAT**

Color Grade D

Clarity Grade VS 1

Cut Grade **IDEAL**



### ADDITIONAL GRADING INFORMATION

Polish **EXCELLENT**Symmetry **EXCELLENT**

Fluorescence NONI

Inscription(s)  LG766609600

Comments: This Laboratory Grown Diamond was created by Chemical Vapor Deposition (CVD) growth process.  
Type IIa



© IGI 2020, International Gemological Institute

FD - 10 20



THIS DOCUMENT WAS PRODUCED WITH THE FOLLOWING SECURITY MEASURES: SPECIAL DOCUMENT PAPER, INK SCREENS, WATERMARK, BACKGROUND DESIGNS, HOLOGRAM AND OTHER SECURITY FEATURES NOT LISTED AND DO EXCEED DOCUMENT SECURITY INDUSTRY GUIDELINES

**www.igi.org**

January 17, 2026	Report No LG7660906	ROUND BRILLIANT	0.09 - 0.13 X 4.84 MM	Color Grade	1.04 CARAT
				Clarity Grade	VS 1
				Cut Grade	IDEAL
				Depth	59.8%
				Table	59%
				Girdle	Medium to Slightly Thick (Faceted)
				Culet	Pointed
				Polish	EXCELLENT
				Symmetry	EXCELLENT
				Fluorescence	NONE
				Annotations(s)	#61 LG7660906
				Comments:	
					This Laboratory Grown Diamond was created by Chemical Vapor Deposition (CVD) growth process.
				Type IId	